





What is inkjet?



Inkjet printers are the most common type of printing devices, which are used as inexpensive home printers as well as in large industrial machines. They produce digital copies by spraying ink onto the paper.

The heart of an inkjet printer is the printhead, containing thousands of tiny microscopic nozzles firing ink onto the substrate. These droplets are typically 3-5 picolitres small, which creates a raster free, photo quality print image.

Combined with a super precise moving mechanism this results in millions of droplets fired every second. Once the droplet touches the substrate a binding effect will take place between the special designed ink and the inkjet coating, delivering stunning, crisp clear, high contrast, waterproof and fade-resistant colour prints.

Beside the standard dye-based ink, which is perfect for any type of media with inkjet coating, we offer for most systems a pigment ink in combination with matte surfaces to get a much higher UV-resistance for outdoor use.

DTM Print is frequently evaluating the market to offer the latest and best technology available in the inkjet market. To produce exceptional product labels for all kind of applications you not only need advanced print technology but also high-quality materials. Inkjet substrates can include matte, semi-gloss and high-gloss materials in paper and polyester as well as special materials like silver, gold or holographic.

Key end-user sectors for booming inkjet printing market

Manufacturers and private labellers use the inkjet label printers to print any kind of food and beverage labels, chemical labels, cosmetic labels, barcode and box labels, personalised labels and many more. To get some ideas please find below a list of our key applications and markets.

- Point of Sale (information signs, coupons, vouchers, price and promotion stickers, labels for cardboards and boxes)
- Logistics (barcode labels)
- Beverages (labels for beer, wine, spirits, coffee, water, etc.)
- Food (labels for food manufacturers, food services, catering, bakeries, beekeepers, etc.)
- Events/Meetings/Conventions (visitor badges, concert/theatre/cinema tickets)
- Hospitality (coupons/vouchers, tickets, name badges)
- Retail Shops (coupons, signs, labels for seasonal products)
- Personalisation (customised labels in all markets, labels for special occasions like weddings, anniversaries, etc.)
- Manufacturing (barcode, box and product labels)
- Seasonal Products & Market Testing (special editions, prototype labels)
- Industry (GHS conform labels)



LX500ec

COLOR LABEL PRINTER

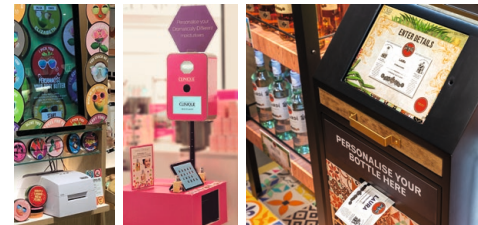


Facts about the LX500ec Color Label Printer

The LX500ec uses advanced high-resolution inkjet technology to produce short runs of product labels in impressive professional quality. Best of all, depending upon the quantity you print, the price per label will be significantly less than labels printed on flexo or offset.

Key facts

- ▶ 4800 dpi full-colour printing
- ▶ 16.7 million colours printable
- ▶ Interchangeable dye or pigment inks
- ▶ Built-in label cutter (guillotine-style)
- ▶ Small, compact size
- ▶ Prints up to 108 mm (4.25") wide



Perfect for POS and kiosk solutions

Everyone loves personalised labels. Due to the small size of the printer, the LX500ec is perfect for POS applications. Let your customers create personalised labels right in your shop! DTM Print provides an individual app solution that can be adapted to your requirements.

What's in the box?

- ▶ NiceLabel Free DTM Edition & BarTender UltraLite (Windows)
- ▶ Belight Swift Publisher 5 (Mac)
- ▶ 4x3" DTM Paper High Gloss starter roll
- ▶ Dye-based CMY ink cartridge
- ▶ Instructions & sample book

More information

Scan the QR code to see all videos related to the LX500ec.

Visit dtm-print.eu for detailed information.



- Ink**
Single tri-colour CMY
- Volume**
Up to 1,000/day
- Print Speed**
Up to 63.5 mm/s (2.5"/s)

- Print Width**
19 - 108 mm (0.75 - 4.25")
- Features**
Guillotine cutter
- Compatible with**
Windows + macOS



LX600e

COLOR LABEL PRINTER



Facts about the LX600e Color Label Printer

The LX600e single cartridge solution for both pigment and dye ink allows users to print a wider variety of applications while easing print operations. Print labels when and where you need them in just the quantities you can actually use. It includes all the same quality features as the LX610e without the built-in contour cutter.

Key facts

- ▶ 4800 dpi full-colour printing
- ▶ 16.7 million colours printable
- ▶ Interchangeable dye or pigment inks
- ▶ Built-in label cutter (pizza-wheel style)
- ▶ Compact & lightweight desktop printer
- ▶ Prints up to 127 mm (5") wide



Low maintenance

Gone are the days of clogged nozzles and unwieldy and expensive printhead replacements. Users get a brand new printhead each time they change the cartridge, simplifying maintenance and dramatically lowering on-going operating costs. With a simple swap-out of ink cartridges, LX600e can print with dye-based ink or pigment ink. Both types of ink work interchangeably on the same printer.

What's in the box?

- ▶ NiceLabel Free DTM Edition & BarTender UltraLite (Windows) Belight Swift Publisher 5 (Mac)
- ▶ Dye-based CMY ink cartridge
- ▶ Instructions & sample book

More information

Scan the QR code to see all videos related to the LX600e.

Visit dtm-print.eu for detailed information.



Ink
Single tri-colour CMY



Print Width
13 - 127 mm (0.5 - 5")



Volume
Up to 3,000/day



Features
Pizza-wheel cutter



Print Speed
Up to 114 mm/s (4.5"/s)



Compatible with
Windows + macOS



LX610e

COLOR LABEL PRINTER



Print & contour cut
all-in-one



Ink
Single tri-colour CMY



Print Width
13 - 127 mm (0.5 - 5")



Volume
Up to 3,000/day



Features
Digital contour cutter
& Pizza-wheel cutter



Print Speed
Up to 114 mm/s (4.5"/s)



Compatible with
Windows + macOS

Facts about the LX610e Pro Color Label Printer

LX610e's printing and precision die-cutting are incorporated into one easy, time-saving step. Print and contour cut custom labels into any shape – all in one simple, unattended process. Choose from standard die-cuts or create an individual contour cut that automatically and precisely follows the outline of the image. You'll never need to order a custom die again.

Key facts

- ▶ 4800 dpi full-colour printing
- ▶ 16.7 million colours printable
- ▶ Interchangeable dye or pigment inks
- ▶ Digital contour cutter & built-in label cutter (pizza-wheel style)
- ▶ Prints up to 127 mm (5") wide
- ▶ Lamination mode



Print & cut software PTCreat™ Pro

With the included PTCreat Pro software you are ready for importing images and different file types as .psd, .ai and .pdf. Powerful features such as layering, the export of images and contour cutting around intricate artwork are part of PTCreat Pro. An auto-trace and cut function is especially useful for printing and cutting complicated shapes and designs.

What's in the box?

- ▶ PTCreat Pro software (Windows & Mac)
- ▶ NiceLabel Free DTM Edition (Windows)
- ▶ Belight Swift Publisher 5 (Mac)
- ▶ DTM Paper Semi Gloss roll
- ▶ Dye-based CMY ink cartridge
- ▶ Instructions & sample book

More information

Scan the QR code to see all videos related to the LX610e.

Visit dtm-print.eu for detailed information.



LX910e

COLOR LABEL PRINTER

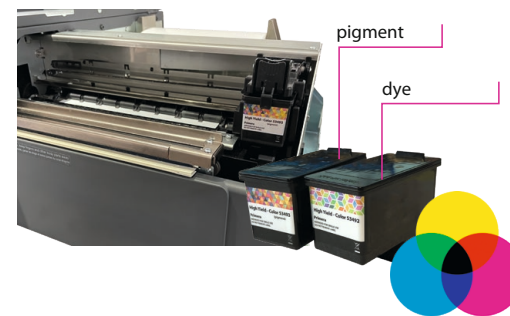


Facts about the LX910e Color Label Printer

With the LX910e you can quickly and easily print labels in outstanding print quality over a width of up to 210 mm. It has a powder-coated metal housing that is certified for areas with increased safety regulations. Especially suitable for use in mechanical and plant engineering, or when electromagnetic screening (EMC) is required.

Key facts

- ▶ 4800 dpi full-colour printing
- ▶ 16.7 million colours printable
- ▶ Interchangeable dye or pigment inks
- ▶ Built-in label cutter (pizza-wheel style)
- ▶ Sturdy Metal Enclosure
- ▶ Prints up to 210 mm wide



One printer, two solutions

Joining at the nexus of versatility and simplicity, its single cartridge solution for both pigment and dye ink allows users to print for a wider variety of applications while easing print operations. Switch easily between dye and pigment ink without changing the printhead.

What's in the box?




- ▶ NiceLabel Free DTM Edition & BarTender UltraLite (Windows)
- ▶ Belight Swift Publisher 5 (Mac)
- ▶ 4x3" DTM Paper High Gloss starter roll
- ▶ Dye-based CMY ink cartridge
- ▶ Instructions & sample book




More information

Scan the QR code to see all videos related to the LX910e.

Visit dtm-print.eu for detailed information.



-  **Ink**
Single tri-colour CMY
-  **Volume**
Up to 5,000/day
-  **Print Speed**
Up to 114 mm/s (4.5"/s)

-  **Print Width**
13 - 210 mm (0.5 - 8.25")
-  **Features**
Pizza-wheel cutter
-  **Compatible with**
Windows + macOS



LX3000e

COLOR LABEL PRINTER

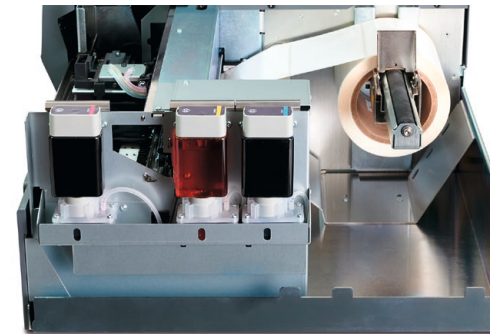


Facts about the LX3000e Color Label Printer

LX3000e features an all-new tanked-ink system and printhead and provides the lowest cost per print. The printer offers the same quality features as LX910e with the addition of an user-replaceable printhead and large individual CMY ink tanks with either dye or pigment ink. It's perfect for a range of industries including health and beauty, food and beverage, chemicals and more.

Key facts

- ▶ 4800 dpi full-colour printing
- ▶ 16.7 million colours
- ▶ Separate, large ink tanks - 60 ml each & pre-primed printhead with 42 ml ink
- ▶ Built-in label cutter (pizza-wheel style)
- ▶ Wired ethernet for network connection
- ▶ Prints up to 210 mm wide



Large ink tanks - lowest printing costs

With separate ink tanks for cyan, magenta and yellow, the LX3000e achieves the lowest print cost per label in its class. Thanks to the user-replaceable print head, a later conversion between dye or pigment ink is possible at any time. The printer impresses with its outstanding print quality, ease of maintenance and print width of up to 210 mm.

- Ink**
Separate CMY ink tanks
- Volume**
Up to 10,000+ per day
- Print Speed**
Up to 114 mm/s (4.5"/s)

- Print Width**
13 - 210 mm (0.5 - 8.25")
- Features**
Pizza-wheel cutter & Wired ethernet
- Compatible with**
Windows + macOS

What's in the box?

- ▶ NiceLabel Free 2019 DTM Version & BarTender UltraLite (Windows)
- ▶ 6x4" DTM Paper Semi Gloss or DTM Paper Matte starter roll
- ▶ User-replaceable printhead
- ▶ A set of CMY ink tanks
- ▶ Instructions & sample book

More information

Scan the QR code to see all videos related to the LX3000e.

Visit dtm-print.eu for detailed information.



Technical Specifications – Comparison Table



	LX500ec COLOR LABEL PRINTER	LX600e COLOR LABEL PRINTER	LX610e COLOR LABEL PRINTER	LX910e COLOR LABEL PRINTER	LX3000e COLOR LABEL PRINTER
Print Method	Thermal inkjet with dye or pigment ink		Thermal inkjet with dye or pigment ink		
Print Resolution	600 x 1200 dpi native; up to 1200 x 4800 dpi		600 x 1200 dpi native; up to 1200 x 4800 dpi		
Droplet size	4 picolitre		4 picolitre		
Print Speeds	Up to 63.5 mm (2.5") per second	Up to 114 mm (4.5") per second	Up to 114 mm (4.5") per second		
Inks	Single high capacity CMY ink cartridge, process black		Single high capacity CMY ink cartridge, process black		Separate high capacity ink tanks for cyan, magenta and yellow (CMY), process black
Printhead	Included in cartridge		Included in cartridge		User replaceable, multi-use printhead
Colours	16.7 million		16.7 million		
Colour Matching	ICC colour profiles included; ability to add custom ICC colour profiles for other media types		ICC colour profiles included; ability to add custom ICC colour profiles for other media types		
Print Width	19 mm (0.75") to 108 mm (4.25")	13 mm (0.5") to 127 mm (5")	Pre die-cut: 13 mm (0.5") to 127 mm (5") Digital die-cut: 13 mm (0.5") to 104 mm (4.1")	13 mm (0.5") to 210 mm (8.25")	
Media Width	25 mm (1") to 108 mm (4.25")	38 mm (1.5") to 130 mm (5.125")	Pre die-cut: 54 mm (2.125") to 130 mm (5.125") Digital die-cut: 121 mm (4.75")	38 mm (1.5") to 212 mm (8.375")	
Print Length	19 mm (0.75") to 609 mm (24")	13 mm (0.5") to 305 mm (12")	13 mm (0.5") to 305 mm (12")	13 mm (0.5") to 1524 mm (60")	
Media Types	Roll-fed pressure-sensitive labels, roll-fed tags, fan-fold labels or tags		Roll-fed pressure-sensitive labels, roll-fed tags, fan-fold labels or tags DTM Print approved materials for continuous digital die-cutting media.	Roll-fed pressure-sensitive labels, roll-fed tags, fan-fold labels or tags	
Media Sensing	Moveable see-through sensor for die-cut labels; reflective sensor for labels and tags with black mark (bottom); can use continuous and pre-printed labels and tags		Moveable see-through sensor for die-cut labels; reflective sensor for labels and tags with black mark (bottom); can use continuous and pre-printed labels and tags		
Media Feed	Internal or external		Internal or external		
Supply Roll	127 mm (5") maximum outer diameter on 51 mm (2") core; core has additional restrictions - see manual	152 mm (6") maximum outer diameter on 76 mm (3") core	152 mm (6") maximum outer diameter on 76 mm (3") core		
Cutter	Built-in "guillotine" style label cutter	Built-in "pizza-wheel" style label cutter	Built-in die-cutting knife blade Built-in "pizza-wheel" style label cutter	Built-in "pizza-wheel" style label cutter	
Ink Level Warning	Calculates actual number of prints remaining based upon ink usage of graphics being printed.		Calculates actual number of prints remaining based upon ink usage of graphics being printed.		
Operating Systems	Windows 7 - 11 Mac OS X 10.11 - macOS 12		Windows 7 - 11 Mac OS X 10.11 - macOS 12		
Data Interface	USB 2.0		USB 2.0	USB 2.0, Wired Ethernet	
Label Design Software	BarTender UltraLite and NiceLabel Free DTM Edition (Windows) Belight Swift Publisher 5 (Mac) Can also be used with most other popular label design & graphics programs.		Digital die-cut: PTCreat Software (for Windows & Mac) Pre die-cut: BarTender UltraLite and NiceLabel Free DTM Edition (Windows) Belight Swift Publisher 5 (Mac)	BarTender UltraLite & NiceLabel Free DTM Edition (Windows) Belight Swift Publisher 5 (Mac) Can also be used with most other popular label design & graphics programs.	
Power Requirements	100-240 V AC (50/60 Hz), 12 V DC, 5.0 A		100-240 V AC (50/60 Hz), 12 V DC, 5.0 A		
Certifications	UL, UL-C, CE, KC, RoHS	UL, UL-C, CE, FCC Class A, RoHS	UL, UL-C, CE, FCC Class A, RoHS		
Weight	3.2 kg	5.2 kg	5.7 kg	16.6 kg	16.6 kg
Dimensions (WxHxD)	264 mm x 180 mm x 389 mm	345 mm x 242 mm x 432 mm	345 mm x 242 mm x 432 mm	438 mm x 231 mm x 438 mm	
Operating Temperature	10 °C to 35 °C		10 °C to 35 °C		
Operating Humidity	10 % to 60 % RH (non-condensing)		10 % to 60 % RH (non-condensing)		
Available Versions	LX500ec (074276) RX500e with RFID module (074256)	-	-	-	LX3000e with dye-based ink (074445) LX3000e with pigment ink (074446)
What's in the Box	LX500ec Color Label Printer, one dye-based CMY ink cartridge (053374), 4x3" DTM Paper High Gloss starter roll, USB 2.0 cable, EU power cord and instructions	LX600e Color Label Printer, one dye-based CMY ink cartridge (053496), USB 2.0 cable, EU power cord and instructions	LX610e Color Label Printer, PTCreat Pro software, one dye-based CMY ink cartridge (053496), DTM Paper Semi Gloss roll (CC365G122HIS), USB 2.0 cable, EU power cord and instructions	LX910e Color Label Printer, one dye-based CMY ink cartridge (053492), 4x3" DTM Paper High Gloss starter roll, USB 2.0 cable, EU power cord and instructions	LX3000e Color Label Printer, a set of CMY ink tanks, a pre-primed printhead, 6x4" DTM Paper Semi Gloss or DTM Paper Matte starter roll, USB 2.0 cable, EU power cord and instructions
Warranty	36 months (after product registration, for devices purchased in EU/EFTA countries and UK)		36 months (after product registration, for devices purchased in EU/EFTA countries and UK)		
Manufacturer	Primera Technology, Inc.		Primera Technology, Inc.		



LOOKING FOR LABELS?

Recommended Genuine DTM Label Stock for inkjet printers is available in many standard sizes as well as custom-made shapes & sizes.

YOU WANT SAMPLES?

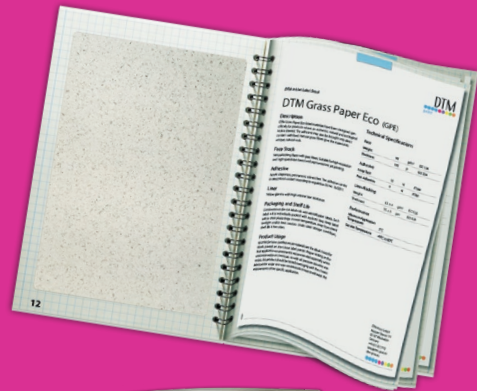


sales@dtm-print.eu

MORE INFORMATION:



supplies.dtm-print.eu



Stay up to date and follow us on social media



DTM Print GmbH
Mainzer Strasse 131
65187 Wiesbaden
Germany
+49 611 927770
sales@dtm-print.eu
dtm-print.eu

