

# MR-F4-1000-C(HI)

## Forklift Mobile Robot



## Key Feature

- Adopts narrow robot body design, transports in forklift mode, and supports mast customization and fork size customization.
- Adopts SLAM navigation to achieve accurate positioning.
- Supports smooth and omnidirectional motions with max. running speed of 1.2 m/s.
- Adopts smart/independent power management, and supports auto-charge and self-returning after charging completed, and environmental friendly.
- Supports multiple safety protections, such as laser/infrared obstacle avoidance, load detection, emergency stop button, and audible alarm.
- Supports lifting, carrying, rotating and lowering goods up to 1000 kg (2204.62 lb.) via standard pallets.
- Supports indicating device status via LCD screen and status indicator.
- Supports Wi-Fi communication and seamless roaming and operation smoothly in a network-covered area.

## Typical Application

E-commerce, electronics manufacturing, automobile, consumer electronics, mechanical manufacturing, texture, tobacco, medicine, etc.

## Available Model

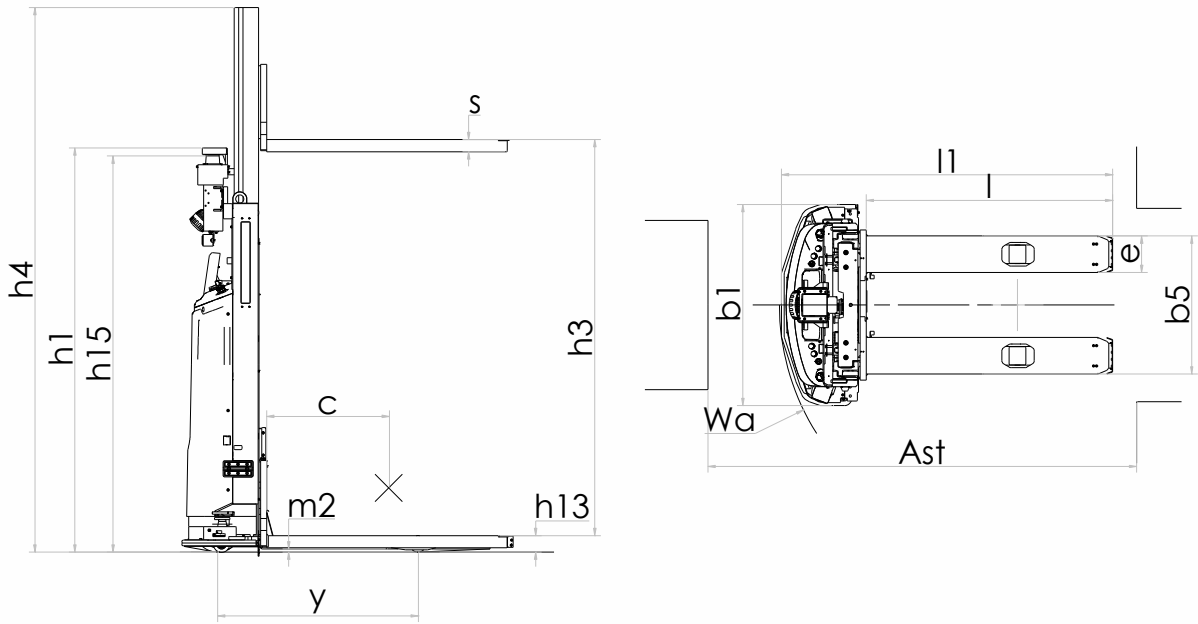
MR-F4-1000-C(HI)

## Accessory

Charging station: CH-48/60(CE)

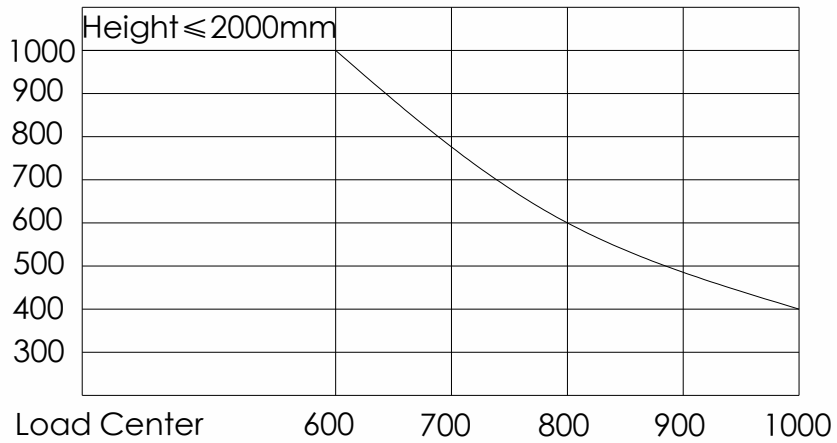


## Dimension

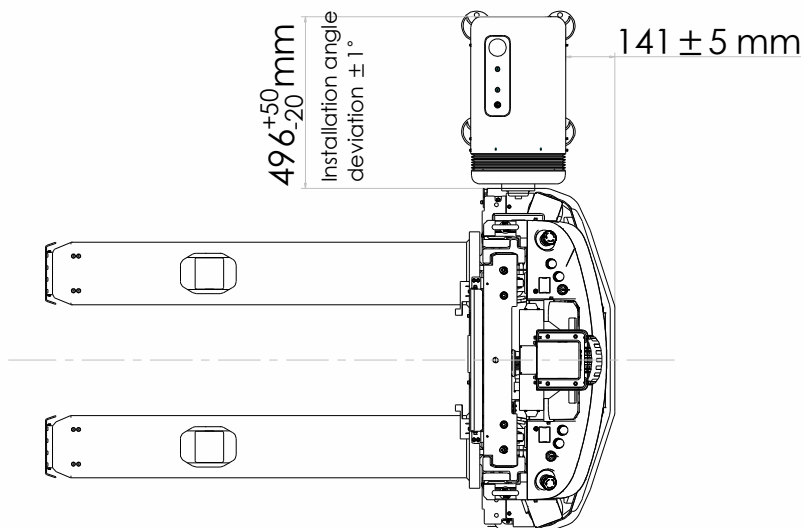


## Loading Curve

Load Weight (kg)



## Charging Station Deployment



## Specification

<b>Model</b>	<b>MR-F4-1000-C(HI)</b>
<b>Basic Parameter</b>	
<b>Dimension</b>	1640 mm × 990 mm × 1990 mm (64.57" × 38.98" × 78.35")
<b>Weight (with Battery)</b>	715 kg (1576.30 lb.)
<b>Rated Load</b>	1000 kg (2204.62 lb.)
<b>Load Center Distance</b>	600 mm (23.62")
<b>Wheelbase</b>	991.3 mm (39.03")
<b>Lifting Height</b>	2031 mm ± 3 mm (79.96" ± 0.11")
<b>Max. Gantry Height</b>	2682 mm (105.59")
<b>Fork above Ground after Lowering</b>	81 mm ± 3 mm (3.19" ± 0.11")
<b>Fork Height/Width/Length</b>	60 mm/180 mm/1220 mm (2.36"/7.09"/48.03")
<b>Fork Distance</b>	680 mm (26.77")
<b>Min. Ground Clearance</b>	16 mm (0.63")
<b>Applicable Pallet Dimension</b>	1200 mm × 1000 mm (47.24" × 39.37")
<b>Laser Scan Height</b>	1950 mm (76.77")
<b>Min. Rotation Radius</b>	1178 mm (46.38")
<b>Right Angled Passage Width</b>	2052 mm (80.79")
<b>Motion Performance</b>	
<b>Running Speed (Full Load/Empty)</b>	1.0/1.2 m/s
<b>Positioning Accuracy</b>	± 10 mm (0.39")
<b>Positioning Angle Accuracy</b>	± 1°
<b>Repeated Positioning Accuracy</b>	± 10 mm (0.39")
<b>Max. Gradeability (Full Load/Empty)</b>	3/5%
<b>Lifting Fork Speed (Full Load/Empty)</b>	100/135 mm/s
<b>Lowering Fork Speed (Full Load/Empty)</b>	130/100 mm/s
<b>Motion Method</b>	Steering wheel driving, supports forward, backward, arc motion and rotating in place
<b>Battery Performance</b>	
<b>Rated Voltage</b>	48 V
<b>Capacity</b>	70 Ah
<b>Charge Cycle</b>	1500 times (for fully charging and discharging)
<b>Endurance</b>	6 h to 8 h
<b>Charge Time</b>	≤ 2 h (for fully charging and discharging)
<b>Charge Method</b>	Side
<b>Safety Protection</b>	
<b>Laser Obstacle Avoidance</b>	Supports
<b>Driving Recorder</b>	Optional
<b>Bumper Strip</b>	Supports
<b>Pallet Detection</b>	Supports
<b>Fork Collision Detection</b>	Supports
<b>Emergency Stop Button</b>	Supports
<b>Audible and Visual Alarm</b>	Supports
<b>Others</b>	
<b>Drive Method</b>	Front wheel driving and steering by motor
<b>Screen</b>	Supports
<b>Navigation Mode</b>	Laser SLAM (reflector panel)
<b>Manual Operation</b>	Manual controller (optional), HikRobot mobile terminal application
<b>Noise</b>	≤ 75 dB

**HIKROBOT**

Hangzhou Hikrobot Co., Ltd.  
en.hikrobotics.com

© Hangzhou Hikrobot Co., Ltd. All Rights Reserved.

Hangzhou Hikrobot does not tolerate any infringement. Any organization or individual may not imitate or reproduce in whole or in part of the content. The data herein is based on Hikrobot's internal evaluation. Actual data may vary depending on specific configuration and operating condition. The information herein is subject to change without notice. All the content has been checked conscientiously. Nevertheless, Hikrobot shall not be liable to damages resulting from errors, inconsistencies or omissions.