

ColorWorks C7500 Series

# SETTING NEW STANDARDS IN COLOUR LABEL PRINTING



**EPSON**<sup>®</sup>  
EXCEED YOUR VISION

# ColorWorks C7500 Series

The Epson ColorWorks C7500 Series sets new standards for reliable, high-speed, high-quality colour label printing that meets all in-house labelling needs for today's manufacturers.

## Reliable

Combining rugged design with the latest Epson technology delivers outstanding performance that can be relied upon in industrial environments.

## Fast

The new PrecisionCore linehead delivers fast print speeds of 300mm/sec even at high resolutions of 600 × 1200dpi.

## Reassuring

With a standard warranty of 1 year or 500km of accumulated print<sup>1</sup>, everything is covered so you don't need to worry about replacement parts.

## ColorWorks C7500

Ideal for prints where durability is key



Uses DURABrite Ultra pigment ink



Prints best on matte media

## ColorWorks C7500G

Combines excellent print quality and durability



Uses UltraChrome DL pigment ink



Prints best on glossy media



## Cost effective

Efficient, high-capacity individual ink cartridges help keep costs down.

## Industrial strength

Standard metallic chassis, autocutter and optional winder/re-winder delivers operational longevity in any environment.

## Add colour to variable data

Add colour by applying simple programming extensions on the ZPLII data stream.

## Plug and play

Upgrade and replace monochrome label printers quickly and easily thanks to built-in ZPL II emulation.

## Durable prints

Thanks to Epson DURABrite Ultra and UltraChrome DL pigment inks, prints are more durable as well as smudge, fade and liquid resistant.

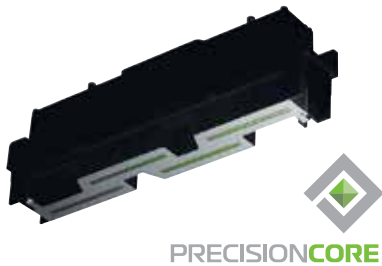
## Simple to use

An intuitive control panel, combined with effortless media roll loading and easy ink cartridge changes, ensures simple, smooth operating for all types of manufacturers.



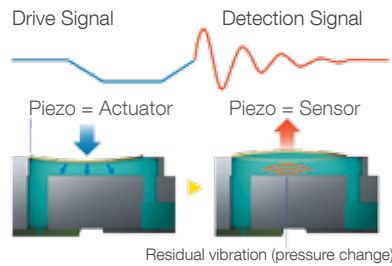
# Technology

## PrecisionCore



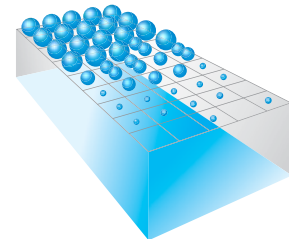
The new PrecisionCore linehead is the innovative technology powering the ColorWorks C7500 Series. Unlike heat-based inkjet systems, PrecisionCore uses powerful micro-mechanical piezo elements to fire the ink droplets. As no heat is applied, the printhead is permanent and does not need replacing<sup>2</sup>.

## Nozzle Verification Technology (NVT)



Ensure consistent, uninterrupted quality with Nozzle Verification Technology that detects blocked nozzles, and dot compensation that compensates for them. NVT works constantly behind the scenes to maximise reliability and reduce downtime.

## Variable Sized Droplet Technology (VSDT)



Epson VSDT delivers the perfect combination of speed, quality and efficient ink usage. The best ink droplet size is always selected so whether it is fine detail, or large areas of colour, the result is the perfect image, produced with optimal efficiency.

# Software

## Microsoft Windows OS drivers and Epson InstallNavi software



InstallNavi software guides you through a simple, fault-free printer installation. Print from any Windows application with Microsoft Windows® printer drivers.

## Direct Command Control



Built-in ESC/Label language is compatible with ZPL II allowing the printer to be used with existing workflows. Plus, ESC/Label ensures the ColorWorks C7500 Series printer can be controlled from any operating system and/or software architecture.

## Native drivers for leading professional labelling software



Native drivers (downloadable from the software vendor's website) use ESC/Label to allow software applications to make use of all key features of the ColorWorks C7500 Series.

# Product specifications

		ColorWorks C7500	ColorWorks C7500G
<b>Technology</b>	Printing method	Line printer (PrecisionCore MicroTFP)	Line printer (PrecisionCore MicroTFP)
	Nozzle configuration	600 Nozzles per colour	600 Nozzles per colour
	Colours	Magenta, Yellow, Cyan, Black	Magenta, Yellow, Cyan, Black
	Ink technology	DURABrite™ Ultra	UltraChrome DL
<b>Print</b>	Printing speed	Max. 300mm/sec at 600 × 1,200dpi (printing width 108mm)	Max. 300mm/sec at 600 × 1,200dpi (printing width 108mm)
	Printing resolution	Max. 600 × 1,200dpi	Max. 600 × 1,200dpi
	Printing width	Max. 108mm	Max. 108mm
<b>Media</b>	Format	Roll (8in external diameter), Fanfold paper	Roll (8in external diameter), Fanfold paper
	Width	Min 50mm, Max 112mm	Min 50mm, Max 112mm
	Type	Die-cut label, Black mark paper, Black mark label	Die-cut label, Black mark paper, Black mark label
<b>General</b>	Interfaces	USB 2.0 Type A, Ethernet interface (100 Base-TX / 10 Base-T)	USB 2.0 Type A, Ethernet interface (100 Base-TX / 10 Base-T)
	Autocutter	Included	Included
	Supply voltage	100 ~ 240 V, 50 ~ 60 Hz	100 ~ 240 V, 50 ~ 60 Hz
	Power consumption	Standby: Appx. 4W, Printing: Appx. 86W	Standby: Appx. 4W, Printing: Appx. 86W
	Temperature / humidity	Storage: -20~60 °C ( 5~85 % RH) Printing: 5~35 °C ( 20~80 % RH)	Storage: -20~60 °C ( 5~85 % RH) Printing: 5~35 °C ( 20~80 % RH)
	Product dimensions	392 × 598 × 395mm (Width × Depth × Height)	392 × 598 × 395mm (Width × Depth × Height)
	Product weight	37kg	37kg
<b>Software</b>	Printer drivers	Windows®	Windows®
	Command set	ESC/Label	ESC/Label

## Options

TU-RC7508: Re-winder	C32C815471
----------------------	------------

## Media

Premium Matte label
High Gloss label
PE Matte label
BOPP High Gloss label
BOPP Satin Gloss label

To find the list of all available media, please visit [www.epson.co.uk/colorworks-media](http://www.epson.co.uk/colorworks-media)

## Consumables

SJMB7500: Maintenance box	C33S020596
---------------------------	------------

### ColorWorks C7500

SJIC26P(K): Ink cartridge (Black)	C33S020618
SJIC26P(C): Ink cartridge (Cyan)	C33S020619
SJIC26P(M): Ink cartridge (Magenta)	C33S020620
SJIC26P(Y): Ink cartridge (Yellow)	C33S020621

### ColorWorks C7500G

SJIC30P(K): Ink cartridge (Black)	C33S020639
SJIC30P(C): Ink cartridge (Cyan)	C33S020640
SJIC30P(M): Ink cartridge (Magenta)	C33S020641
SJIC30P(Y): Ink cartridge (Yellow)	C33S020642



ESC/Label



Better Products for a Better Future

To find out more visit [www.epson.co.uk/C7500](http://www.epson.co.uk/C7500)

<sup>1</sup> The printhead is covered by the warranty of the printer. Standard warranty of the printer is 1 year or 500km of accumulated printed length, whichever comes first. Check with your Epson authorised dealer for the optional extended warranty packages available in your region.  
<sup>2</sup> Product lifetime of ColorWorks C7500 is defined as 500km of paper length fed.

For more information please contact:  
 Telephone: 01952 607111 (UK)  
 01 436 7742 (Republic of Ireland)  
 E-mail: [enquiries@epson.co.uk](mailto:enquiries@epson.co.uk)  
 Chat: [etalk.epson-europe.com](mailto:etalk.epson-europe.com)  
 Fax: 0871 222 6740

Web: [www.epson.co.uk](http://www.epson.co.uk)  
[www.epson.ie](http://www.epson.ie)

\* Local call rate.

Trademarks and registered trademarks are the property of Seiko Epson Corporation or their respective owners. Product information is subject to change without prior notice.

