



# 2024 PRODUCT GUIDE



GLOBAL VERSION

# Contents

- About Our Company ..... 3
- Our Brand Promise In Action ..... 4
- Core Verticals..... 5
- Performance Product Line ..... 6
  - Key Features ..... 7
  - Mobile Printers ..... 8
  - Desktop Printers ..... 11
  - Industrial Printers ..... 17
  - Print Engines..... 20
- Enterprise Product Line ..... 22
  - Key Features ..... 23
  - Enterprise Printers..... 24
  - RFID Printers..... 27
  - Barcode Inspection Printers..... 30
- Genuine Supplies..... 32
- Integrated Print Solutions..... 33
- Global Service Program..... 34
- Partner Programs..... 35

Our goal is to serve as the premier provider for barcode label printing applications worldwide.



# About Our Company

**TSC Auto ID is a leading provider of innovative thermal label printing solutions.**

Founded in 1991, we own and operate ISO certified production facilities and have offices around the world, serving customers in more than 100 countries.

We offer a wide range of barcode label printing solutions including mobile, desktop, industrial, and enterprise-grade barcode label printers, RFID printers, integrated barcode label inspection systems, print engines, advanced printer software, standard and custom labels, and ribbons. Our products are used in nearly every industry including transportation and logistics, retail, manufacturing, warehousing, food and beverage, healthcare, and automotive. We specialise in providing reliable, high quality label printing solutions to move products through the supply chain efficiently.

We have sold more than 7.9 million printers around the world to meet the needs of small and medium-sized businesses to Fortune 500 companies.



# Our Brand Promise In Action

## Our Purpose

To provide world-class, innovative, and high-performance tracking and identification solutions

## Our Mission

To provide our customers with high-quality, high-performance solutions that identify all assets immediately, accurately, and sustainably

## Our Vision

To be the trusted global leader for asset tracking and identification solutions



## Our Values

### Partnership

We are dedicated to helping our partners succeed by delivering tailor-made printing solutions

### Dedication

We are driven to become the worldwide total solution provider for barcode label printing applications

### Innovation

We are committed to designing and manufacturing leading-edge products that provide business-critical solutions

# Core Verticals

Worldwide, major companies rely on TSC Auto ID to provide asset tracking and identification solutions. We have a proven track record in providing solutions to key industries and specialise in adapting solutions to meet diverse business needs.



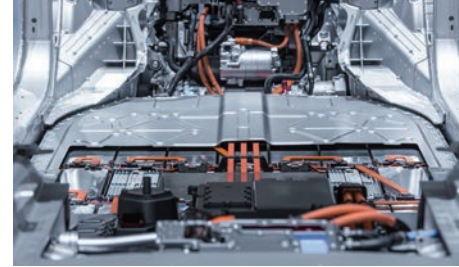
## Transportation & Logistics

- Compliance labeling
- ROI of readable barcodes
- RFID in the supply chain
- Boost efficiency with cross-docking



## Retail

- Defend against chargeback fees
- Track and trace with RFID
- Direct store delivery solutions
- Product tagging and price changes



## Manufacturing

- Meet compliance regulations and avoid chargeback fees for bad barcodes
- Better performing RFID printers
- High-value asset tracking with adaptive RFID tags



## Food & Beverage

- Product labeling with critical information
- Deliver directly to customers
- Barcode inspection technology
- Mobile inspection labels



## Healthcare

- Ensure the safety and security of patients with accurate identification
- Cerner certified and ready for patient admission



## Entertainment & Hospitality

- Event admission and security made easier than ever before
- Simple operation interface streamlines ticketing and order taking



## Automotive

- Track and trace
- Barcode inspection technology
- Mobile inspection labels
- Tire labeling



## Horticulture

- Print high-quality plant stakes
- Track seed production
- Capture every detail
- Print vinyl labels

# Performance Product Line

## We Offer A Wide Array Of High Performance, Cost-Effective Thermal Label Printer Options.

Our Performance barcode label printers are known for high-quality and affordability. We offer a wide range of printers for diverse applications from rugged mobile, budget-friendly desktop, to high-performance industrial printers. These printers can easily fit into almost any environment with the power of our standard firmware capable of providing extensive customisations and most major printer languages right out of the box.

Our printers are easy to install, service, and manage with the support of TSC Console and SOTI Connect remote printer management software with enhanced features and tools. Customers have the power to control their printer fleet from anywhere from a single seat.



Mobile Printers



Desktop Printers



Industrial Printers



Print Engines

# Key Features



## Highly Customisable

A wide selection of hardware and compatible supplies allows for high levels of customisations on any TSC device in our Late Point Configuration center.



## Wide Range of Products

An extensive variety of printer selection gives customers options across all levels of printers from mobile to industrial applications.



## Printer Language Support

Emulations of most major printer languages enables easy plug-and-play in most applications with TSPL-EZD/TSPL-EZC or ESC-POS firmware.



## Remote Printer Management

SOTI Connect offers cloud-based remote printer management is compatible with TSC printers. TSC Console is a powerful tool to quickly manage TSC printers remotely including configuration settings, program deployment, and troubleshooting.



## Print Operation Management

TSC Standalone Creator is an exclusive software that makes updating interactive touch panel menus and label designs easy by using an icon-based drag-and-drop interface for TSC printers. No programming experience is required. TSCPRTGo is a mobile label design app that works with TSC Standalone Creator to offer users seamless printing operation on Android and iOS mobile devices for productive mobile printing.



## Superior Price Performance And Quality

TSC rugged label printers ensure precise end-to-end identification, resulting in high quality and significant cost savings.

# Mobile Printers

Print receipts and labels on the go and on demand. Our small, lightweight, and rugged mobile printers have a long battery life and are made to last the entire workday. Efficiently print at the point of application to reduce downtime and increase production. Our mobile printers are capable of printing linerless labels to help reduce waste and boost productivity. A full line of accessories are available. RFID mobile printer option is also available to allow workers to print and encode labels hands-free in challenging working environment.







## TDM Series

The TDM Series features a rugged palm-sized design for easy, on-the-go printing for up to 42 hours on a single battery charge.

Model	Resolution	Max. Print Width	Max. Print Length	Max. Print Speed	Dimensions (W x H x D)	Weight	Tools
TDM-20	203 dpi	1.89"	110"	4 ips	79.0mm x 116.0mm x 36.5mm 3.11" x 4.57" x 1.44"	0.22 kg	TSC Console
TDM-30	203 dpi	2.83"	110"	4 ips	105.0mm x 116.0mm x 49.5mm 4.13" x 4.57" x 1.95"	0.38 kg	

### Key Features

- High capacity 1130 mAh & 3080 mAh Lithium Ion battery operates up to 17/42 hours of use per battery charge
- Self-Diagnostic TPH Care Mechanism
- Optional Smart Battery for TDM-30 with TSC Printer Management



## Alpha-2R

The Alpha-2R is a comfortable, light-weight printer capable of working with any mobile printing application where you need access to quick, simple receipts or tickets.

Model	Resolution	Max. Print Width	Max. Print Length	Max. Print Speed	Dimensions (W x H x D)	Weight	Tools
Alpha-2R	203 dpi	1.89"	90"	4 ips	89.3mm x 134.5mm x 56.5mm 3.52" x 5.3" x 2.22"	0.35 kg	TSC Console

### Key Features

- Energy Star 2.0 compliant printer with high capacity 1620mAh Lithium Ion battery operates up to 17 hours of use per battery charge
- Largest media capacity in the 2" receipt market supports 58mm wide and 50mm outer diameter receipt roll
- Wi-Fi CERTIFIED™



## Alpha-3R

The Alpha-3R is a comfortable, light-weight printer capable of printing labels on demand. It is built for durability and can withstand up to 5-foot falls and keep printing.

Model	Resolution	Max. Print Width	Max. Print Length	Max. Print Speed	Dimensions (W x H x D)	Weight	Tools
Alpha-3R	203 dpi	2.83"	90"	4 ips	116mm x 148mm x 70mm 4.57" x 5.83" x 2.75"	0.55 kg	TSC Console

### Key Features

- Large paper capacity to reduce the frequency of changing paper roll
- High-speed processor and extensive memory for fast print speeds of up to 4" (102mm) per second
- Lasts more than 30 hours of printing receipts/selected labels on a single battery charge



## Alpha-30R

The Alpha-30R mobile printer is user-friendly and drop-resistant. It enhances customer service, boosts productivity and improves shopper experience in retail stores. The Alpha-30R is stylish and comfortable in use and prints receipts or labels on-demand. Mobile printing operations can be carried out much faster and with more accuracy.

Model	Resolution	Max. Print Width	Max. Print Length	Max. Print Speed	Dimensions (W x H x D)	Weight	Tools
Alpha-30R Basic	203 dpi	2.83"	110"	5 ips	118mm x 158mm x 68mm 4.64" x 6.22" x 2.68"	0.65kg	TSC Console SOTI Connect
Alpha-30R Premium	203 dpi	2.83"	110"	6 ips			

### Key Features

- IP54 rated and withstands 1.0m(3.3ft)tumble
- Tested to be drop-proof/vibration-proof, with MIL-STD-810 certification
- Withstand 2.1m(6.9ft) drop
- Easy connectivity via MFi Bluetooth® 5.0 with NFC tap-to-pair
- Reliable and secured dual-band 802.11ac Wi-Fi with fast roaming



## Alpha-30L / Alpha-40L

The Alpha-30L and Alpha-40L mobile printers propel you into the next generation of smart, enhanced technology solutions for industrial-grade label printing applications. They also provide a full line of accessories to assist in performing diverse labeling tasks while on the go, especially in rigorous logistics applications.

Model	Resolution	Max. Print Width	Max. Print Length	Max. Print Speed	Dimensions (W x H x D)	Weight	Tools
Alpha-30L	203 dpi	2.83"	110"	5 ips	117mm x 173mm x 79mm 4.61" x 6.81" x 3.11"	0.745 kg	TSC Console SOTI Connect
Alpha-40L	203 dpi	4.09"	110"	5 ips	160mm x 191mm x 79mm 6.30" x 7.52" x 3.11"	0.985 kg	

### Key Features

- IP54-rated and withstands 1.0 m tumble
- Withstands up to 6 ft. (1.8 m) drop, 8.2 ft. (2.5 m) with protective case
- Built-in peeler or linerless kit option
- TSC Sense Care to monitor smart battery and printhead status
- RFID(Alpha-40L only), please refer to page 28



Model	Resolution	Max. Print Width	Max. Print Length	Max. Print Speed	Dimensions (W x H x D)	Weight	Tools
Alpha-30LHC	203 dpi	2.83"	110"	5 ips	117mm x 173mm x 79mm 4.61" x 6.81" x 3.11"	0.745 kg	TSC Console SOTI Connect

### Key Features

- Clean white and grey colour scheme
- Antimicrobial and disinfectant-ready casing
- IEC 60601-1 Medical-Grade standard power supply

# Desktop Printers

We manufacture one of the largest selections of desktop printers on the market. Designed to the highest quality standards, our desktop printers are budget-friendly and customisable to adapt to a wide variety of industries and applications. Our desktop printers come standard with premium features like high-resolution, and remote printer management.



## DA Series

The DA Series features a user-friendly design ideal for a wide variety of applications including product marking, point of sale, retail, small office, shipping labels, and many more at a very competitive price.



Model	Resolution	Max. Print Width	Max. Print Length	Max. Print Speed	Dimensions (W x H x D)	Weight	Tools
DA210	203 dpi	4.25"	110"	6 ips	172mm x 165mm x 195mm 6.77" x 6.50" x 7.68"	1.5 kg	TSC Console TSCPRTGo
DA310	300 dpi	4.16"	40"	4 ips			
DA220	203 dpi	4.25"	1,000"	6 ips			
DA320	300 dpi	4.16"	450"	4 ips			

### Key Features

- High quality double walled clamshell design
- Up to 152.4mm (6") per second print speed
- Spring loaded media holder
- 5" OD media capacity

### Key Features

- Crisp white and bright full-colour scheme
- Antimicrobial and disinfectant-ready casing
- IEC 60601-1 Medical-Grade standard power supply

Model	Resolution	Max. Print Width	Max. Print Length	Max. Print Speed	Dimensions (W x H x D)	Weight	Tools
DA220W*	203 dpi	4.25"	1,000"	6 ips	172mm x 165mm x 195mm 6.77" x 6.50" x 7.68"	1.5 kg	TSC Console TSCPRTGo
DA320W*	300 dpi	4.16"	450"	4 ips			

\*Product availability varies among regions; please contact your local sales representative for more information.

## TDP Series

The TDP series features a compact design and high-performance engine and is ideal for healthcare, retail and asset tagging labeling applications.



Model	Resolution	Max. Print Width	Max. Print Length	Max. Print Speed	Dimensions (W x H x D)	Weight	Tools
TDP-225	203 dpi	2.13"	90"	6 ips	109mm x 171mm x 209mm 4.29" x 6.73" x 8.23"	1.2 kg	TSC Console TSCPRTGo
TDP-324	300 dpi	1.89"	40"	4 ips			

### Key Features

- High quality double-walled clamshell design
- Up to 152.4mm (6") per second print speed
- Serial and USB 2.0 connectivity

Model	Resolution	Max. Print Width	Max. Print Length	Max. Print Speed	Dimensions (W x H x D)	Weight	Tools
TDP-225W	203 dpi	2.05"	90"	6 ips	109mm x 210mm x 260mm 4.29" x 8.27" x 10.24"	1.2 kg	TSC Console TSCPRTGo
TDP-324W	300 dpi	1.89"	40"	4 ips			

### Key Features

- Designed to hold 6.5" OD wristbands
- Front LCD display
- Ethernet and USB 2.0 connectivity

Model	Resolution	Max. Print Width	Max. Print Length	Max. Print Speed	Dimensions (W x H x D)	Weight	Tools
TDP-247	203 dpi	4.25"	90"	7 ips	200mm x 164mm x 240mm 7.87" x 6.46" x 9.45"	1.9 kg	TSC Console TSCPRTGo
TDP-345	300 dpi	4.17"	40"	5 ips			

### Key Features

- Up to 177.8mm (7") per second print speed
- Drop-in media loading
- 5" OD internal media supply, optional external roll mount supports 8.4" OD label rolls on 1" or 3" cores





## DH Series

The DH series is highly comprehensive and adaptive to diverse printing requirements and designed to conquer various printing challenges. With future-proof addable upgrade modules, the DH series supports versatile labeling applications for medications, specimens, take-out food, weighing scales, entertainment tickets, shipping, linerless and so forth.

Model	Resolution	Max. Print Width	Max. Print Length	Max. Print Speed	Dimensions (W x H x D)	Weight	Tools
DH220/DH220T	203 dpi	2.13"	1,000"	8 ips	138mm x 172mm x 210mm 5.43" x 6.77" x 8.27"	1.6 kg	TSC Console TSC Standalone Creator TSCPRTGo SOTI Connect
DH320/DH320T	300 dpi	2.24"	450"	6 ips			
DH220E	203 dpi	2.13"	90"	8 ips		1.3 kg	TSC Console
DH320E	300 dpi	2.24"	40"	6 ips			



Model	Resolution	Max. Print Width	Max. Print Length	Max. Print Speed	Dimensions (W x H x D)	Weight	Tools
DH240T	203 dpi	4.25"	1,000"	8 ips	208mm x 170mm x 235mm 8.19" x 6.69" x 9.25"	2.1 kg	TSC Console TSC Standalone Creator TSCPRTGo SOTI Connect
DH340T	300 dpi	4.16"	450"	6 ips			



Model	Resolution	Max. Print Width	Max. Print Length	Max. Print Speed	Dimensions (W x H x D)	Weight	Tools
DH220THC	203 dpi	2.13"	1,000"	8 ips	138mm x 172mm x 210mm 5.43" x 6.77" x 8.27"	1.6 kg	TSC Console TSC Standalone Creator TSCPRTGo SOTI Connect
DH320THC	300 dpi	2.24"	450"	6 ips			



Model	Resolution	Max. Print Width	Max. Print Length	Max. Print Speed	Dimensions (W x H x D)	Weight	Tools
DH240THC	203 dpi	4.25"	1,000"	8 ips	208mm x 170mm x 235mm 8.19" x 6.69" x 9.25"	2.1 kg	TSC Console TSC Standalone Creator TSCPRTGo SOTI Connect
DH340THC	300 dpi	4.16"	450"	6 ips			

### Key Features

- Auto switch print language emulation
- Future-proof addable upgrade including connectivity, peeler, cutter (linerness) and narrow media adapter
- Media damper mechanism for high-precision printing
- Vertical DPI adjustment algorithm minimizes printing deviation
- Internal Embedded Webpage and virtual control panel for real-time remote printer management

### Key Features

- Crisp white and bright full-colour scheme
- Antimicrobial and disinfectant-ready casing
- IEC 60601-1 Medical-Grade standard power supply

## TH Series

The TH series is highly comprehensive and adaptive to diverse printing requirements and designed to conquer various printing challenges. Featuring a 10mm to 120mm media width range, the TH Series has high adaptivity to diverse media types. Along with the media damper, and addable upgrade modules, the TH series is compatible with special media types such as cable labeling, car plates, medical wristbands, apparel tags, care labels and more.



Model	Resolution	Max. Print Width	Max. Print Length	Max. Print Speed	Dimensions (W x H x D)	Weight	Tools
TH220T	203 dpi	2.13"	1,000"	8 ips	146mm x 179mm x 231mm 5.75" x 7.05" x 9.09"	1.8 kg	TSC Console TSC Standalone Creator TSCPRTGo SOTI Connect
TH320T	300 dpi	2.24"	450"	6 ips			



Model	Resolution	Max. Print Width	Max. Print Length	Max. Print Speed	Dimensions (W x H x D)	Weight	Tools
TH240/TH240T	203 dpi	4.25"	1,000"	8 ips	223mm x 186mm x 286mm 8.78" x 7.32" x 11.26"	2.8 kg	TSC Console TSC Standalone Creator TSCPRTGo SOTI Connect
TH340/TH340T	300 dpi	4.16"	450"	6 ips			



Model	Resolution	Max. Print Width	Max. Print Length	Max. Print Speed	Dimensions (W x H x D)	Weight	Tools
TH220THC	203 dpi	2.13"	1,000"	8 ips	146mm x 179mm x 231mm 5.75" x 7.05" x 9.09"	1.8 kg	TSC Console TSC Standalone Creator TSCPRTGo SOTI Connect
TH320THC	300 dpi	2.24"	450"	6 ips			



Model	Resolution	Max. Print Width	Max. Print Length	Max. Print Speed	Dimensions (W x H x D)	Weight	Tools
TH240THC	203 dpi	4.25"	1,000"	8 ips	223mm x 186mm x 286mm 8.78" x 7.32" x 11.26"	2.8 kg	TSC Console TSC Standalone Creator TSCPRTGo SOTI Connect
TH340THC	300 dpi	4.16"	450"	6 ips			

### Key Features

- Auto switch print language emulation
- Future-proof addable upgrade including connectivity, peeler, cutter (regular) and narrow media adapter
- Media damper mechanism for high-precision printing
- Vertical DPI adjustment algorithm minimises printing deviation
- Internal Embedded Webpage and virtual control panel for real-time remote printer management

### Key Features

- Crisp white and bright full-colour scheme
- Antimicrobial and disinfectant-ready casing
- IEC 60601-1 Medical-Grade standard power supply



## TE Series

The TE Series features our value-leading, most affordable desktop printer models. The TE Series models offer a popular footprint to meet nearly any customer's label printing needs at an attractive price.

Model	Resolution	Max. Print Width	Max. Print Length	Max. Print Speed	Dimensions (W x H x D)	Weight	Tools
TE200	203 dpi	4.25"	110"	6 ips	204mm x 164mm x 280mm 8.03" x 6.46" x 11.02"	2.4 kg	TSC Console TSCPRTGo
TE300	300 dpi	4.16"	40"	5 ips			
TE210	203 dpi	4.25"	1,000"	6 ips		2.5 kg	
TE310	300 dpi	4.16"	450"	5 ips			

### Key Features

- Supports both 1" core 300m long ribbon roll or 0.5" core 110m long ribbon roll.
- Multiple interfaces: Ethernet, USB, USB host, and serial (for TE210 and TE310)
- 5" OD internal media supply, optional external roll mount supports 8.4" OD
- Print mechanism for kiosk applications



## TC Series

The TC Series can produce 4-inch-wide labels, tags or receipts at up to 6 ips, offering one of the best price-performance combinations on the desktop printer market.

Model	Resolution	Operation	Max. Print Width	Max. Print Length	Max. Print Speed	Dimensions (W x H x D)	Weight	Tools
TC200	203 dpi	1 button, 1 tricolor	4.25"	90"	6 ips	203mm x 191.5mm x 259.3mm 7.99" x 7.54" x 10.21"	2.2 kg	TSC Console TSCPRTGo
TC300	300 dpi	LED	4.15"	40"	4 ips			
TC210	203 dpi	6 buttons, color LCD	4.25"	1,000"	6 ips		2.3 kg	
TC310	300 dpi	display	4.15"	450"	4 ips			

### Key Features

- Multiple interfaces: Ethernet, USB, USB host (TC210/TC310), parallel (TC200/TC300), and serial
- Rugged double wall construction
- Use standard 0.5" notched core ribbons



## TTP Series

The TTP Series brings TSC quality, innovation, reliability and value in a small printer footprint. It delivers premium performance for most retail, medical and office applications at an affordable price.

Model	Resolution	Max. Print Width	Max. Print Length	Max. Print Speed	Dimensions (W x H x D)	Weight	Tools
TTP-225	203 dpi	2.13"	90"	5 ips	140mm x 177mm x 241mm 5.51" x 6.97" x 9.49"	2.45 kg	TSC Console TSCPRTGo
TTP-323	300 dpi	2.13"	40"	3 ips			

### Key Features

- Small size – space saving design
- Easy media loading
- High quality double walled clamshell design



Model	Resolution	Max. Print Width	Max. Print Length	Max. Print Speed	Dimensions (W x H x D)	Weight	Tools
TTP-247	203 dpi	4.25"	90"	7 ips	213mm x 188mm x 314mm 8.39" x 7.40" x 12.36"	2.8 kg	TSC Console TSCPRTGo
TTP-345	300 dpi	4.17"	40"	5 ips			

### Key Features

- Uses 300m ribbons
- Dual-motor design
- Up to 177.8mm (7") per second print speed



## TX Series

Available in three models, the TX Series is ideal for printing high volume shipping labels, high resolution product marking and graphic solutions.

Model	Resolution	Max. Print Width	Max. Print Length	Max. Print Speed	Dimensions (W x H x D)	Weight	Tools
TX210	203 dpi	4.25"	1,000"	8 ips	226mm x 198mm x 332mm 8.90" x 7.80" x 13.07"	3.75 kg	TSC Console TSCPRTGo SOTI Connect
TX310	300 dpi	4.17"	450"	6 ips		3.75 kg	
TX610	600 dpi	4.17"	100"	4 ips	226mm x 200mm x 332mm 8.90" x 7.87" x 13.07"	4.08 kg	

### Key Features

- Large memory capacity – 128 MB Flash and 128 MB SDRAM
- Label capacity up to 127mm (5") OD
- Up to 203mm (8") per second print speed
- 3.5" color TFT Display (Standard for TX610, Optional for TX210 and TX310)
- USB host interface for standalone application
- SOTI Connect is available for TX210/TX310/TX610





# Industrial Printers

Our Performance industrial thermal label printer selection is built for high-performance and high-volume printing. With some of our fastest print speeds and premium printhead technology, our Performance industrial printers deliver high quality, crisp and clear labels for nearly any industrial printing application. Our industrial printers come with enhanced features like colour LCD displays, multiple resolutions, and extensive communication options including Wi-Fi and Bluetooth®.



## ML Series

The ML Series is a new generation of smaller industrial barcode label printers that are designed to fit into more work areas. It features a durable design, ease-of-use, noise-reduced printing, self-diagnostic TPH Care and easy maintenance.

Model	Resolution	Max. Print Width	Max. Print Length	Max. Print Speed	Dimensions (W x H x D)	Weight	Tools
ML240	203 dpi	4.25"	110"	6 ips	248mm x 245mm x 330mm 9.76" x 9.65" x 12.99"	7.4 kg	TSC Console TSCPRTGo
ML340	300 dpi	4.16"	40"	5 ips			
ML240P	203 dpi	4.25"	1,000"	6 ips			
ML340P	300 dpi	4.16"	450"	5 ips		7.6 kg	

### Key Features

- Robust and agile design for optimal quality
- Noise-Reduction printing engineering
- Self-Diagnostic TPH care mechanism
- 2.3" color GUI display and intuitive indicator



## MB Series

The MB Series of industrial thermal label printers is a value leader for 4-inch wide light industrial label printing.

Model	Resolution	Max. Print Width	Max. Print Length	Max. Print Speed	Dimensions (W x H x D)	Weight	Tools
MB240	203 dpi	4.21"	1,000"	12 ips	248mm x 274mm x 436mm 9.76" x 10.79" x 17.17"	9 kg	TSC Console TSC Standalone Creator TSCPRTGo
MB340	300 dpi	4.16"	450"	9 ips			
MB240T	203 dpi	4.21"	1,000"	12 ips			
MB340T	300 dpi	4.16"	450"	9 ips		9.2 kg	

### Key Features

- 3.5" intuitive color touch display
- Flexible and advanced TPH mechanism
- One step to quick setup/update
- TSC Standalone Creator is available for MB240T/MB340T



## MH Series

The MH Series features is our flagship industrial barcode label printer with premium printhead technology, fast processor, and memory capacity to print high quality labels at the fastest speeds.

Model	Resolution	Max. Print Width	Max. Print Length	Max. Print Speed	Dimensions (W x H x D)	Weight	Tools
MH241/MH241T	203 dpi	4.09"	1,000"	14 ips	276mm x 326mm x 502mm 10.87" x 12.83" x 19.76"	15.6 kg/ 15.7 kg	TSC Console TSC Standalone Creator TSCPRTGo SOTI Connect
MH341/MH341T	300 dpi	4.09"	450"	12 ips			
MH641/MH641T	600 dpi	4.09"	100"	6 ips			
MH241P	203 dpi	4.09"	1,000"	14 ips	276mm x 412mm x 502mm 10.87" x 16.22" x 19.76"	18.93 kg	
MH341P	300 dpi	4.09"	450"	12 ips			
MH641P	600 dpi	4.09"	100"	6 ips			

### Key Features

- Supports top and bottom black mark media and selectable media sensor settings on display menu
- Capable of peeling off minimum 0.5" small label in length (MH241/MH341/MH641 and MH241T/ MH341T/MH641T)
- Supports 8" OD full roll internal rewinder(Only on MH241P/MH341P/MH641P)
- Easy printhead and platen roller replacement
- TSC Standalone Creator is available for MH241T/MH341T/MH641T/MH241P/MH341P/MH641P



## MH Series (Continued)

Model	Resolution	Max. Print Width	Max. Print Length	Max. Print Speed	Dimensions (W x H x D)	Weight	Tools
MH261T	203 dpi	6.61"	580"	12 ips	357mm x 313mm x 514mm 14.05" x 12.32" x 20.24"	17.8 kg	TSC Console TSC Standalone Creator TSCPRTGo SOTI Connect
MH361T	300 dpi	6.61"	260"	10 ips			

### Key Features

- High quality die-cast aluminum design
- Supports media width up to 6.8"
- Easy printhead and platen roller replacement



## TTP Series

With its high quality printhead and fast processor, the TTP Series is ideal for a wide range of compliance labeling, brand marketing, inventory control, drum labeling, warning signs and a host of other signage solutions.

Model	Resolution	Max. Print Width	Max. Print Length	Max. Print Speed	Dimensions (W x H x D)	Weight	Tools
TTP-286MT	203 dpi	8.5"	450"	6 ips	440mm x 336mm x 514mm 17.32" x 13.23" x 20.24"	23.7 kg	TSC Console TSC Standalone Creator TSCPRTGo
TTP-384MT	300 dpi	8.64"	200"	4 ips			

### Key Features

- Die-cast chassis, sheet metal structure with clear media view window
- Can manage label widths up to 9.5" with a maximum print width up to 8.64" wide at 300 dpi high resolution
- 600 m ribbon supply



## MX Series

Featuring our fastest print speeds ever, the MX Series boosts productivity with and is ideal for applications that include manufacturing, logistics, shipping, and product identification.

Model	Resolution	Max. Print Width	Max. Print Length	Max. Print Speed	Dimensions (W x H x D)	Weight	Tools
MX241P	203 dpi	4.09"	1,000"	18 ips	300mm x 393mm x 510mm 11.81" x 15.47" x 20.08"	18 kg	TSC Console TSC Standalone Creator TSCPRTGo SOTI Connect
MX341P	300 dpi	4.09"	450"	14 ips			
MX641P	600 dpi	4.09"	100"	6 ips			

### Key Features

- Heavy duty die-cast aluminum design
- Fast print speed - up to 18 ips
- 4.3" color TFT touch panel with 6-key button design for new GUI
- 600 m ribbon capacity

# Print Engines

Our print engines are purpose-built for any print and apply system. It can be easily integrated to meet any application. The robust design can withstand harsh environments and ensure performance for years to come.

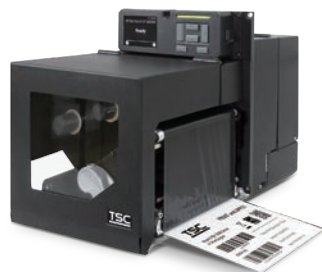




## PEX-2000 Series

The 4-inch and 6-inch PEX-2000 Print Engine was designed to easily integrate into any label applicator, and can operate 24/7 to maximise uptime. It greatly reduces printer integration time and effort while speeding up time-to-market for automatic labelers. Available for RFID option in all models.

Model	Resolution	Max. Print Width	Max. Print Length	Max. Print Speed	Dimensions (W x H x D)	Weight	Tools
PEX-2240L PEX-2240R	203 dpi	4.09"	1,000"	18 ips	245mm x 300mm x 390mm 9.65" x 11.81" x 15.35"	12.7kg	TSC Console SOTI Connect
PEX-2340L PEX-2340R	300 dpi	4.09"	450"	14 ips			
PEX-2640L PEX-2640R	600 dpi	4.09"	100"	6 ips			



Model	Resolution	Max. Print Width	Max. Print Length	Max. Print Speed	Dimensions (W x H x D)	Weight	Tools
PEX-2260L PEX-2260R	203 dpi	6.61"	580"	14 ips	245mm x 300mm x 450mm 9.65" x 11.81" x 17.71"	14.35kg	TSC Console SOTI Connect
PEX-2360L PEX-2360R	300 dpi	6.61"	260"	12 ips			



## PEX-1001 Series

Equipped for years of reliability, ease of use, and cost-conscious serviceability, the PEX-1001 print engine series is an ideal solution for heavy duty print and apply applications where downtime is not an option. The rugged PEX-1001 offers simple integration into both new and existing label application installations.

Model	Resolution	Max. Print Width	Max. Print Length	Max. Print Speed	Dimensions (W x H x D)	Weight	Tools
PEX-1121 (LH) PEX-1221 (RH)	203 dpi	4.09"	1,000"	18 ips	245mm x 300mm x 390mm 9.65" x 11.81" x 15.35"	13 kg	TSC Console SOTI Connect TSCPRTGo
PEX-1131 (LH) PEX-1231 (RH)	300 dpi	4.09"	450"	14 ips			
PEX-1161 (LH) PEX-1261 (RH)	600 dpi	4.09"	100"	6 ips			

### Key Features

- Easily fit into any label applicator
- Supports DB15 & DB25 interface and GPIO emulations
- Supports major printer languages with customisable firmware
- Top black mark sensor for preprinted labels
- Robust metal chassis withstands harsh environments
- Support RFID (Optional)
- Support ribbon saver (Optional)

### Key Features

- Highest print speed in its class, up to 18 ips
- High precision label registration supports labels as small as 5mm high
- Easily mount the print engine into the current applicator and support print language emulation

# Enterprise Product Line

**Our enterprise-grade printers and advanced label technology solutions are ideal for enterprise customers who put a high value on performance, ease and flexibility of integration, and high reliability.**

Our Enterprise printers are built on the Printronix System Architecture (PSA) with numerous features, including support for nine competitor printer languages, the latest Wi-Fi technology, including enterprise-grade security, and support for remote management software. In addition, our Enterprise printers offer extensive RFID encoding options on both desktop and industrial models, as well as integrated inline barcode verification solutions. All our Enterprise printers are designed and tested for high reliability and durability to withstand the most challenging environments.



Enterprise Printers



RFID Printers



Barcode Inspection Printers

# Key Features



## Heavy-Duty Construction and Reliability

The all-metal construction of the industrial printers ensure that customers are not concerned about the product durability in manufacturing and warehouse environments. Further, all units are tested to meet minimum reliability requirements to ensure the printers keep working even under heavy print load conditions.



## Flexible, Seamless Integration

Our Enterprise printers make integration easy due to Printronix System Architecture (PSA). Our Enterprise printers share the same system interface and feature set including a unified control panel, extensive printer language compatibility, connectivity, enterprise security, and management and integration tools. Our printers support all major printer languages, including Postscript, PDF, IPDS, and legacy impact printer data streams, ensuring seamless plug-and-play integration



## Barcode Inspection

The optional ODV-2D real-time barcode verifier and validator scans every barcode on every label as they are printed to ensure each one meets ISO-based grade thresholds. Any label with a bad barcode can be overstruck and re-printed automatically, providing a great solution for compliance applications where only.



## High Volume Printing

Our Enterprise printers not only print at speeds up to 14 ips with excellent print quality, they are also designed to print volumes in excess of 15,000 labels per day to satisfy the most demanding applications.



## RFID

Our RFID printers include support for encoding on both 4-inch and 6-inch models, standard RFID labels and on-metal tags, and advanced RFID calibration features for easy setup. Any labels that did not encode properly are overstruck and re-printed to ensure only functional RFID labels are used.



## Remote Management

All printers support both PrintNet Enterprise server-based remote management tool and SOTI Connect cloud-based IoT management solution. Both tools offer a dashboard of all printer assets and enable IT administrators to manage and maintain all aspects of these devices.

# Enterprise Printers

Considered rugged workhorses, our full range of mid-range to enterprise-level industrial barcode label printers are designed for the most demanding environments. Available in a wide selection of sizes, our Enterprise printers deliver high performance, flexibility, and reliability through a range of printer language emulations and secure and reliable wireless connectivity options. RFID and ODV-2D (barcode inspection) are also available as optional add-ons to give you additional capabilities when needed. All of our Enterprise printers are equipped with SOTI Connect remote printer management.







## T800 Series

### Desktop Printer

The T800 high-performance desktop printer incorporates the features and functions normally expected in an industrial printer. With a compact footprint, large supplies capacity, advanced Wi-Fi and MFi Bluetooth® support, and optional UHF RFID, this printer offers great value for lower print volume enterprise applications.

Model	Resolution	Max. Print Width	Max. Ribbon Length	Max. Print Speed	Dimensions (W x H x D)	Weight	Tools
T820	203 dpi	4.1"	300 m	8 ips	210mm x 190mm x 285mm 8.3" x 7.5" x 11.2"	2.9 kg	PrintNet Enterprise SOTI Connect
T830	300 dpi	4.1"	300 m	6 ips			

### Key Features

- High print speed at up to 8 ips and print volumes up to 2,500 4x6" labels per day
- Large supplies capacity with 5" media roll and 300m ribbon
- PSA suite with nine competitor printer languages, unified control panel, and advanced Wi-Fi
- Optional cutter and peel-off media handling
- Optional RAIN UHF RFID encoding, automatic RFID label calibration



## T4000 Series

### Compact Industrial Printer

The compact T4000 industrial printer works well for medium duty applications and where workspace is a premium. With a large supplies capacity, advanced Wi-Fi and MFi Bluetooth® support, and optional UHF RFID, this printer is a great option for medium duty enterprise applications.

Model	Resolution	Max. Print Width	Max. Ribbon Length	Max. Print Speed	Dimensions (W x H x D)	Weight	Tools
T4204	203 dpi	4.1"	450 m	10 ips	264mm x 276mm x 455mm 10.40" x 10.9" x 17.9"	10 kg	PrintNet Enterprise SOTI Connect
T4304	300 dpi	4.1"	450 m	7 ips			

### Key Features

- High print speed at up to 10 ips and print volumes up to 5,000 4x6" labels per day
- Large supplies capacity with 8" media roll and 450m ribbon
- PSA suite with nine competitor printer languages, unified control panel, and advanced Wi-Fi
- Optional cutter and peel-off media handling
- Optional RAIN UHF RFID encoding with support for standard RFID labels and on-metal tags



## T6000e Series

### Mid-Range Industrial Printer

Featured in RFID Journal's Top 10 Products of 2020, the T6000e sets the standard for productivity and versatility in fast paced environments where speed, exceptional print quality, and advanced features are needed. With the ability to support both RFID and barcode verification in a single printing solution, the T6000e truly stands apart from its rivals.

Model	Resolution	Max. Print Width	Max. Ribbon Length	Max. Print Speed	Dimensions (W x H x D)	Weight	Tools
T820	203 dpi	4.1"	300 m	8 ips	210mm x 190mm x 285mm 8.3" x 7.5" x 11.2"	2.9 kg	PrintNet Enterprise SOTI Connect
T830	300 dpi	4.1"	300 m	6 ips			

### Key Features

- High print speed at up to 14 ips and print volumes up to 10,000 4x6" labels per day
- Large supplies capacity with 8" media roll and 450 m ribbon
- PSA suite with nine competitor printer languages, unified control panel, and advanced Wi-Fi
- Optional cutter, peel-off, and batch rewind media handling
- Optional RAIN UHF RFID encoding with support for standard RFID labels and on-metal tags
- Optional ODV-2D integrated real-time barcode verifier



## T8000 Series

### High-End Industrial Printer

Our flagship product, the T8000 is our most durable and reliable, 24/7 enterprise printer. Offered in 4-inch, 6-inch, and 8-inch versions, it supports high print volume applications in challenging production environments such as in cold conditions down to -5°C (23°F). It is also available with our integrated barcode verifier to ensure barcode quality in compliance and regulatory applications.

Model	Resolution	Max. Print Width	Max. Ribbon Length	Max. Print Speed	Dimensions (W x H x D)	Weight	Tools
T8204	203 dpi	4.1"	625 m	14 ips	297.2mm x 330.2mm x 520.7mm 11.7" x 13" x 20.5"	16.7 kg	PrintNet Enterprise SOTI Connect
T8304	300 dpi	4.1"		12 ips			
T8206	203 dpi	6.6"	12 ips	340.4mm x 330.2mm x 520.7mm 13.4" x 13" x 20.5"	18.1 kg		
T8306	300 dpi	6.6"	10 ips				
T8208	203 dpi	8.5"	10 ips	391.2mm x 330.2mm x 520.7mm 15.4" x 13" x 20.5"	19.5 kg		
T8308	300 dpi	8.5"	8 ips				

### Key Features

- High print speed at up to 14 ips and print volumes up to 15,000 4x6" labels per day
- Large supplies capacity with 8" media roll and 625 m ribbon
- PSA suite with nine competitor printer languages, unified control panel, and advanced Wi-Fi
- Optional cutter, peel-off, and batch rewind media handling
- Optional ODV-2D integrated real-time barcode verifier

# RFID Printers



Our RFID printers offer solutions for a wide range of applications from enterprise-level desktop printers to high-volume industrial printers. We offer high-performance features, including 4-inch and 6-inch print widths, the ability to print on standard RFID labels and on-metal tags and up to 600 dpi for small labels. Our RFID printers are enhanced to include high-speed encoding, high-memory encoding, and RFID field upgrade kits. Our printers are easy to use, easy to calibrate and offer compatibility with PrintNet Enterprise remote printer management software.

In addition to stationary RFID printers, we offer a portable RFID model to print and encode labels hands-free and on the go. The Alpha-40L RFID is compatible with SOTI Connect and TSC Console remote printer management software.





## Alpha-40L RFID

### Mobile RFID Printer

The Alpha-40L RFID features a user-friendly, heavy-duty and drop-resistant design, enhancing workers' mobility in challenging environments. The rugged design is ideal for applications such as direct store delivery (DSD) and industrial field service.

Model	Resolution	Max. Print Width	Max. Ribbon Length	Max. Print Speed	Dimensions (W x H x D)	Weight	Tools
Alpha-40L RFID	203 dpi	4.09"	110"	5 ips	160mm x 191mm x 79mm 6.30" x 7.52" x 3.11"	1.025 kg	TSC Console SOTI Connect

### Key Features

- High speed UHF RFID encoding
- IP54 rating for dust and water resistance
- Rugged design for drop from 6' (1.8m) and tumbles from 3.3' (1.0m)
- Optional IP-rated protective case with 8.2' (2.5m) drop
- MFi Bluetooth® 5.0 with NFC tap-to-pair, or dual band Wi-Fi connectivity



## T800 Series

### Desktop RFID Printer

The T800 high-performance RFID printer offers industrial features in a desktop footprint. Applications include tracking products throughout the supply chain, taking inventory in real-time, and quickly locating assets within the enterprise.

Model	Resolution	Max. Print Width	Max. Ribbon Length	Max. Print Speed	Dimensions (W x H x D)	Weight	Tools
T820	203 dpi	4.1"	300 m	8 ips	210mm x 190mm x 285mm 8.3" x 7.5" x 11.2"	2.9 kg	PrintNet Enterprise SOTI Connect
T830	300 dpi	4.1"	300 m	6 ips			

### Key Features

- Rugged design in a small footprint
- High speed UHF RFID encoding
- Industry-leading performance
- Support for standard smart labels



## T4000 Series

### Compact Industrial RFID Printer

The T4000 offers industrial printer features in a compact footprint and the ability to encode on both standard smart labels and on-metal tags.

Model	Resolution	Max. Print Width	Max. Ribbon Length	Max. Print Speed	Dimensions (W x H x D)	Weight	Tools
T4204	203 dpi	4.1"	450 m	10 ips	264mm x 276mm x 455mm 10.40" x 10.9" x 17.9"	10 kg	PrintNet Enterprise SOTI Connect
T4304	300 dpi	4.1"	450 m	7 ips			

### Key Features

- Industrial construction and performance in a compact design
- Support for both standard smart labels and on-metal tags
- Industry-leading encoding commands



## T6000e Series

### Mid-Range Industrial RFID Printer

Featured in RFID Journal's Top 10 Products of 2020, the T6000e offers top of the line RFID encoding abilities including high-speed and high-memory encoding.

Model	Resolution	Max. Print Width	Max. Ribbon Length	Max. Print Speed	Dimensions (W x H x D)	Weight	Tools
T6204e	203 dpi	4.1"	450 m	14 ips	297.2mm x 330.2mm x 520.7mm 11.7" x 13" x 20.5"	16.7 kg	PrintNet Enterprise SOTI Connect
T6204e ODV-2D	203 dpi	4.1"		8 ips	276.86mm x 312.42mm x 558.8mm 10.9" x 12.3" x 22"	16.3 kg	
T6304e	300 dpi	4.1"		12 ips	297.2mm x 330.2mm x 520.7mm 11.7" x 13" x 20.5"	16.7 kg	
T6304e ODV-2D	300 dpi	4.1"		8 ips	276.86mm x 312.42mm x 558.8mm 10.9" x 12.3" x 22"	16.3 kg	
T6604e	600 dpi	4.1"		6 ips	297.2mm x 330.2mm x 520.7mm 11.7" x 13" x 20.5"	16.7 kg	
T6604e ODV-2D	600 dpi	4.1"		8 ips	276.86mm x 312.42mm x 558.8mm 10.9" x 12.3" x 22"	16.3 kg	
T6206e	203 dpi	6.5"		12 ips	340.4mm x 330.2mm x 520.7mm 13.4" x 13" x 20.5"	18.1 kg	
T6306e	300 dpi	6.5"		10 ips	340.4mm x 330.2mm x 520.7mm 13.4" x 13" x 20.5"	18.1 kg	

### Key Features

- Multiple options and configurations available
- 4" and 6" print widths available
- 600 dpi option for small labels and barcodes
- Support for standard smart labels, on-metal tags and many other tag constructions
- With optional ODV barcode verifier, inspect, grade and encode RFID labels with a single printer



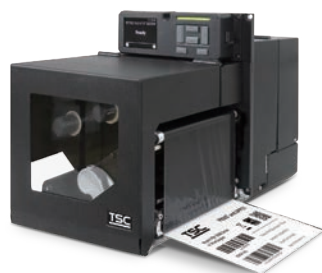
## PEX-2000 Series

The PEX-2000 Print Engine seamlessly combines high-performance RFID encoding with exceptional reliability in a compact design for automating item-level RFID tagging. With a rich legacy, it effortlessly incorporates into any print and apply system, providing a comprehensive solution.

Model	Resolution	Max. Print Width	Max. Print Length	Max. Print Speed	Dimensions (W x H x D)	Weight	Tools
PEX-2240L PEX-2240R	203 dpi	4.09"	1,000"	18 ips	245mm x 300mm x 390mm 9.65" x 11.81" x 15.35"	12.7kg	TSC Console SOTI Connect
PEX-2340L PEX-2340R	300 dpi	4.09"	450"	14 ips			
PEX-2640L PEX-2640R	600 dpi	4.09"	100"	6 ips			

### Key Features

- Up-to-date standards support
- Support for various tag and label constructions
- RFID auto calibration for effortless label switching
- Streamlined validation with automatic overstrike

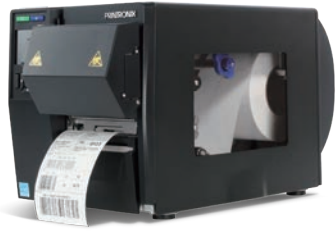


Model	Resolution	Max. Print Width	Max. Print Length	Max. Print Speed	Dimensions (W x H x D)	Weight	Tools
PEX-2260L PEX-2260R	203 dpi	6.61"	580"	14 ips	245mm x 300mm x 450mm 9.65" x 11.81" x 17.71"	14.35kg	TSC Console SOTI Connect
PEX-2360L PEX-2360R	300 dpi	6.61"	260"	12 ips			

# Barcode Inspection Printers

Our barcode inspection technology is integrated into our Enterprise industrial thermal printers. Easy to use, our barcode verification and validation technology reads each barcode as it is printed, strikes out rejected barcodes, and reprints a new label automatically. Our barcode inspection printers give customers confidence that every barcode label they send out will be accurate and printed at the highest level of quality. The ODV-2D pays for itself by eliminating costly chargebacks and fines for non-conforming labels. Available as an option on the T8000 and T6000e thermal printers.





## T6000e ODV-2D

### Mid-Range Industrial Printer

The award-winning T6000e with ODV-2D inline barcode inspection technology is also compatible with the optional top-of-the-line RFID high-speed encoding abilities.

Model	Resolution	Max. Print Width	Max. Ribbon Length	Max. Print Speed	Dimensions (W x H x D)	Weight	Tools
T6204e ODV-2D	203 dpi						
T6304e ODV-2D	300 dpi	4.1"	450 m	8 ips	276.86mm x 312.42mm x 558.8mm 10.9" x 12.3" x 22"	16.3 kg	PrintNet Enterprise SOTI Connect
T6604e ODV-2D	600 dpi						

### Key Features

- The ODV-2D is an optional fully-integrated barcode inspection system, and ships pre-mounted
- Automatically finds, reads, grades, and reports results for every barcode on every label
- Works with all major thermal printer languages, as well as Postscript and PDF
- Automatically overstrikes and reprints any label with missing or low quality barcodes
- Easy settings for threshold grade level and recovery actions
- Compatible with the optional 600dpi printing and RFID encoding feature



## T8000 ODV-2D

### High-End Industrial Printer

Our most versatile enterprise-grade industrial printer, the T8000 Series with ODV-2D integrated barcode inspection takes productivity and performance to new heights.

Model	Resolution	Max. Print Width	Max. Ribbon Length	Max. Print Speed	Dimensions (W x H x D)	Weight	Tools
T8204 ODV-2D	203 dpi						
T8304 ODV-2D	300 dpi	4.1"			297.18mm x 330.2mm x 558.8mm 11.7" x 13" x 22"	18.1 kg	
T8206 ODV-2D	203 dpi		625 m	8 ips			PrintNet Enterprise SOTI Connect
T8306 ODV-2D	300 dpi	6.5"			340.36mm x 137.41mm x 609.6mm 13.4" x 14.5" x 24"	19.4 kg	

### Key Features

- The ODV-2D is an optional fully-integrated barcode inspection system, and ships pre-mounted (4" only)
- Automatically finds, reads, grades, and reports results for every barcode on every label
- Works with all major thermal printer languages, as well as Postscript and PDF
- Automatically overstrikes and reprints any label with missing or low quality barcodes
- Easy settings for threshold grade level and recovery actions
- Compatible with the optional 600dpi printing and RFID encoding feature
- Available with optional cutter and protective cover (4" only)

# Genuine Supplies

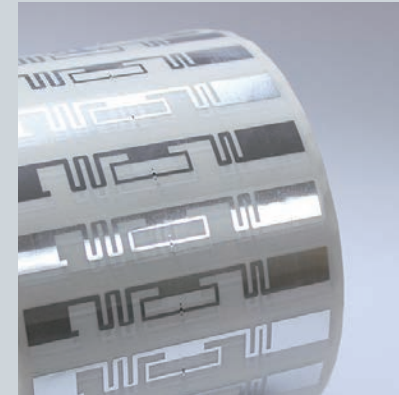
Our product expertise runs deep and our supplies knowledge base is comprehensive.

With product experts that can guide you through all stages of your consumables application, you can be assured that your supplies will be optimised in form, fit and function.\*

\*Supplies offer vary by region



Thermal Printing Solutions



UHF RFID Labels



Wristbands



Linerless Labels



Inkjet Labels and Tanks



Custom Labels



Cleaning Supplies



# Integrated Print Solutions

## Printer Management Made Easy



### PrintNet Enterprise

PrintNet Enterprise is a free software that allow you to easily organize your Enterprise thermal and RFID printers in a single dashboard from which you can remotely monitor and control them from any networked PC.



### TSC Console

TSC Console is a free software for quickly and remotely monitoring printers, configuring settings, deploying programs, and troubleshooting problems.



### SOTI Connect

SOTI Connect is an Enterprise-Grade Printer Management software that provides complete lifecycle management of our printer models.

---

## Streamlined Printing Operation

### At The Workplace And On-The-Go



### TSC Standalone Creator

TSC Standalone Creator is an exclusive software that makes updating interactive touch panel menus and label designs easy by using an icon-based drag-and-drop interface for TSC printers. No programming experience is required.



### TSCPRTGo

TSCPRTGo is an exclusive software that works with TSC Standalone Creator to offer users seamless print operation on-the-go at anytime, anywhere at your workplace.

# Global Service Program

## Flexible Options

Our Global Service Program provides a set of pre-determined, fixed cost services and support throughout the years to keep printer in proper working condition by planning and budgeting all the service needs. We offer a full line-up contract duration of up to five years to enhance the protection. We recommend to choose and purchase the right service at the time the printer is purchased. This way, you can enjoy the selected service at value price.



### On-Site Service

On-Site Service is a fast and convenient way to ensure operation is up and running at all times. Our technicians will travel to your location to get printer back to optimal performance. All labour and travel for the repair are included. Under this service agreement, all our printers receive the following at NO ADDITIONAL COST:

A service technician will arrive the next business day after a service call to most locations<sup>1</sup>

- On-site response with parts is readily available
- TSC Auto ID will cover ALL parts<sup>2</sup>
- All TSC Auto ID genuine parts and labour<sup>3</sup>
- All travel cost for the repair is included

1. Service availability & office hours depend on the region.

2. For detailed terms and conditions, please refer to the "Warranty Coverage" table in the Global Service Program brochure.

3. Does not apply to third-party service providers.



### Return Parts to Depot

(Return Parts to Depot is for certified partners only)

Adding Return Parts service at the point of purchase is an effective way of protecting the printer. Return Parts to Depot contains two options—Extended Warranty and Comprehensive Warranty.

With different parts coverage, you can select the right option. The Return Parts to Depot service also guarantees that certified and trained technicians will only use genuine new TSC Auto ID's parts. The service also includes technical support and diagnosis by phone or email to determine if the issue can be resolved at the point of failure.

# Partner Programs

When you become a TSC Auto ID partner, you join one of the fastest growing AIDC companies in the world. Our partners gain exclusive access to high-performance products and dedicated support. We provide a regional program to support partners on a local level as well as a global network program for partners to enjoy unique benefits when doing business around the world. Both of our programs are designed to give partners the tools and resources they need to succeed.



## Power Partner Program

By joining our partner program, you gain access to leading-edge barcode printing solutions and technology for enterprises at any level. We offer products you can trust at competitive prices that fit any end-user budget.



## Power Partner Program

Our Elite Partners for Global Accounts (EPGA) program consists of a highly competent global network of Elite Partners and global accounts. Resellers and end-users gain key advantages for doing business on a global scale with exclusive program benefits and incentives.





#### **CORPORATE HEADQUARTERS**

TSC Auto ID Technology Co., Ltd.  
Tel: +886 2 2218 6789  
E-mail: apac\_sales@tscprinters.com

#### **LI ZE PLANT**

TSC Auto ID Technology Co., Ltd.  
Tel: +886 3 990 6677  
E-mail: apac\_sales@tscprinters.com

#### **CHINA**

Tianjin TSC Auto ID Technology Co., Ltd.  
Tel: +86 22 5981 6661  
E-mail: apac\_sales@tscprinters.com

#### **ASIA PACIFIC**

TSC Auto ID Technology Co., Ltd.  
Tel: +886 2 2218 6789  
E-mail: apac\_sales@tscprinters.com

#### **KOREA**

TSC Korea Representative Office  
Tel: +82 2 852 3322  
E-mail: apac\_sales@tscprinters.com

#### **INDIA**

TSC India Representative Office  
Tel: +91 2249 679 315  
E-mail: apac\_sales@tscprinters.com

#### **EMEA**

TSC Auto ID Technology EMEA GmbH  
Tel: +49 (0) 8106 37979 000  
E-mail: emea\_sales@tscprinters.com

#### **RUSSIA**

TSC Auto ID Technology EMEA GmbH  
Tel: +7 495 646 3538  
E-mail: emea\_sales@tscprinters.com

#### **MIDDLE EAST**

TSC Auto ID Technology ME Ltd, FZE  
Tel: +971 4 2533 069  
E-mail: emea\_sales@tscprinters.com

#### **AMERICAS**

TSC Auto ID Technology America Inc.  
Tel: +1 657 258 0808  
E-mail: americas\_sales@tscprinters.com

#### **MEXICO**

TSC Mexico Representative Office  
Tel: +1 52 (33) 3673 1406  
E-mail: americas\_sales@tscprinters.com

#### **BRAZIL**

TSC Brazil Representative Office  
Tel: +55 (11) 3554 7225  
E-mail: americas\_sales@tscprinters.com