

keonn Retail RFID
Systems

AdvanPrint™

Cloud-based RFID encoding
& printing system





Video

Benefits:

- Easy, fast and effective printing and encoding
- Connected to the cloud
- No need of a local computer nor local software
- Prints anywhere
- Convenient to manage from any location
- Plug and play

Applications:

- Retail stores
- Distribution centers
- Libraries
- Hospitals
- Warehouses
- Factories
- Other spaces

Product overview

AdvanPrint is a **cloud-based RFID encoding and printing system**, that comprises 4 elements:

- RFID printer
- AdvanScan handheld reader or a conventional computer (sold separately)
- AdvanPrint software module (installed in AdvanScan or in a computer)
- AdvanCloud cloud-based software

AdvanPrint is optimized to accurately and efficiently **print and encode labels** for multiple tracking applications.

AdvanPrint is **easy and quick** to manage from **any location around the globe** through **AdvanCloud** (cloud based software). It prints and encodes hundreds or thousands of RFID tags at retail stores, offices, distribution centers, warehouses, or other spaces.

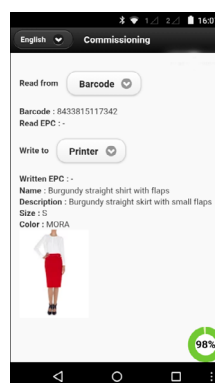
AdvanPrint offers a **complete encoding solution**.

It can be managed with the AdvanScan handheld reader, or with a conventional computer.

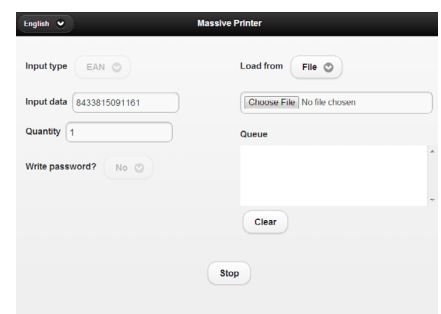
Product features

AdvanPrint is plug & play. It does not require any external computer, nor any installation. It only needs to be powered and connected to WiFi or to Ethernet, and it starts printing and encoding tags.

With AdvanScan (Android)



With a computer (Windows)



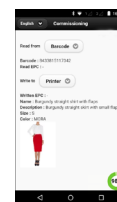
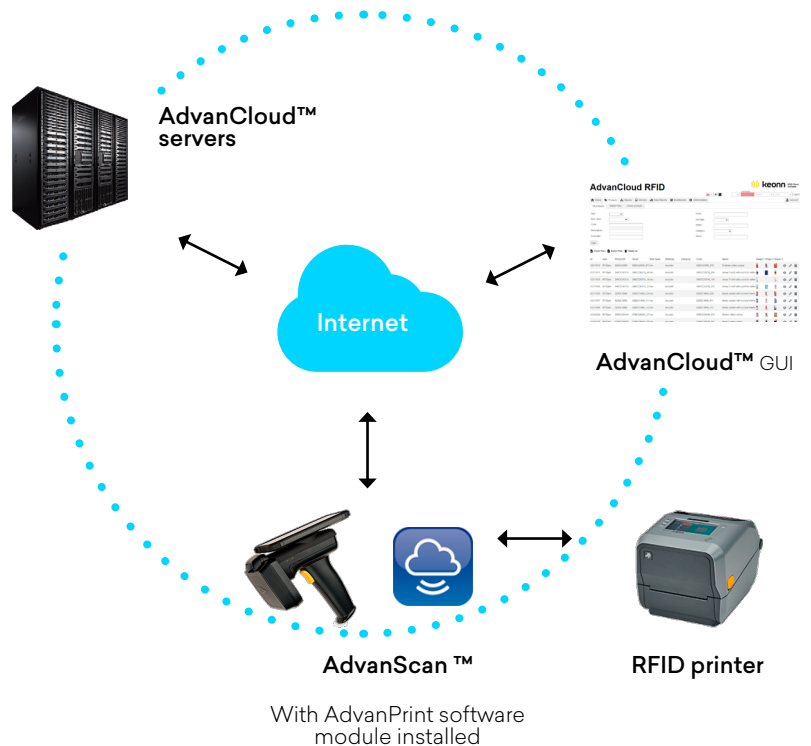
Process when managed with AdvanScan



1. The user opens the AdvanPrint software module in AdvanScan.
2. With AdvanScan, the user scans the barcode of an item, or reads the RFID tag of an item, or writes manually the code of an item.
3. AdvanScan retrieves the information of the scanned item from AdvanCloud (size, price, composition, etc.).
4. AdvanScan sends this information to the RFID printer.
5. The RFID tag is printed and encoded.
6. AdvanScan shows the information of the encoded items on its screen: name of the item, description, size, image, etc.



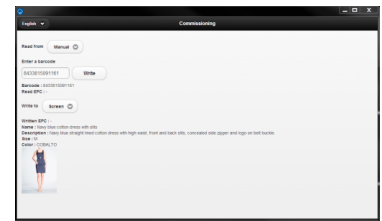
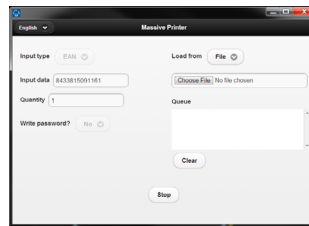
Scheme of operation when managed with AdvanScan



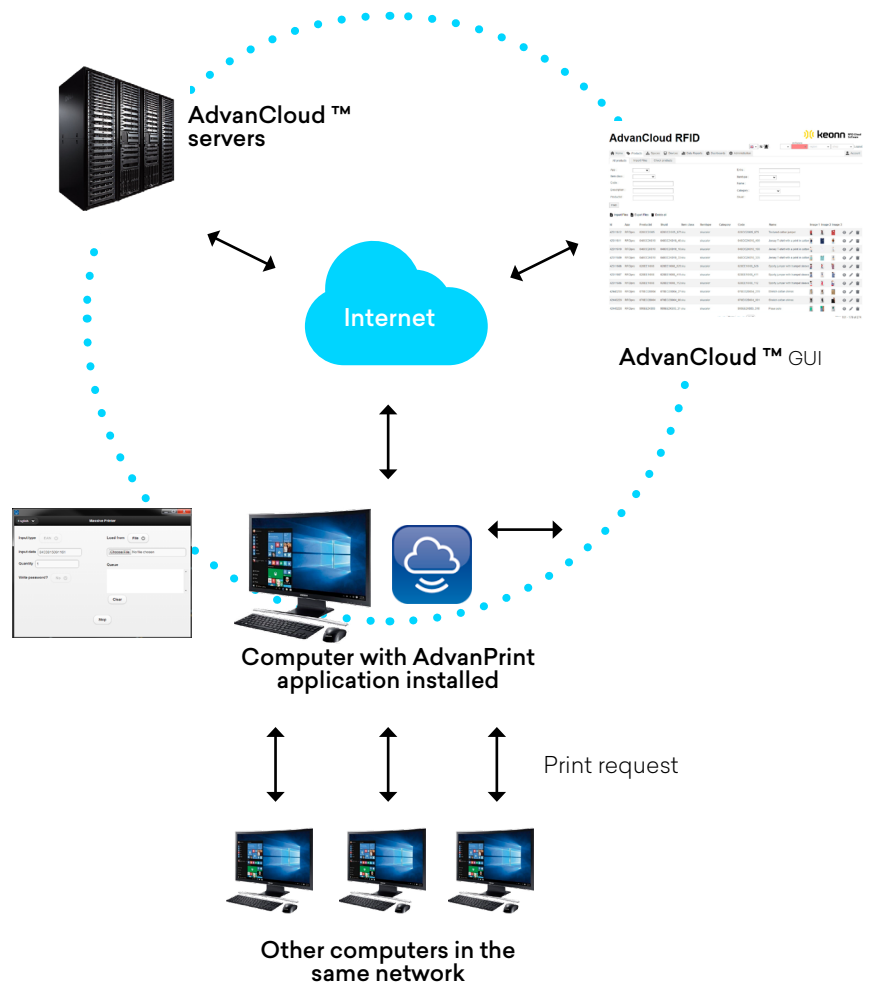
Process when managed with a computer



1. The user opens the AdvanPrint software in the computer where it is installed, or sends print commands from any other computer in the same network.
2. The user can select to print individual labels, or can print a large set of labels (by dragging the codes, by loading from a file or by loading from a URL).
3. AdvanPrint retrieves the information of the selected items from AdvanCloud (size, price, composition, etc.).
4. AdvanPrint sends this information to the RFID printer.
5. The RFID tags are printed and encoded.
6. AdvanPrint shows the information of the encoded items on its screen: name of the item, description, size, image, etc.



Scheme of operation when managed with a computer



Compatible RFID printers

AdvanPrint is available for 4 printer models:

- AdvanPrint small (Zebra ZD621R and SATO CT4-LX) for retail stores, small distribution centres, libraries, etc.
- AdvanPrint large (Zebra ZT411 and SATO CL4NX) for industrial environments (distribution centres, warehouses, factories, etc.)



Specifications AdvanPrint small (Zebra ZD621R)

Air Protocol Interface	EPC global UHF Class 1 Gen 2 / ISO 18000-6C
Available regions	Europe, USA, Canada, Brazil, Mexico, Japan, China, Asia-Pacific, Middle East, and more
Resolution	203 dpi/8 dots per mm 300 dpi/12 dots per mm
Memory	128 MB Std memory (4 MB user available) 256 MB Std Flash memory (56 MB user available)
Maximum Print Speed	152 mm per second (200 dpi) 102 mm per second (300 dpi)
Print methods	Thermal transfer and direct thermal
Connection	Wi-Fi and Ethernet
Temperature	+ 5 °C to + 41 °C
Size	193 mm x 191 mm x 254 mm (7.6 in x 27.6 in x 2.7 in)
Weight	2.2 kg (77.6 oz)



Specifications AdvanPrint large (Zebra ZT411)

Air Protocol Interface	EPC global UHF Class 1 Gen 2 / ISO 18000-6C
Supported regions	Europe, USA, Canada, Brazil, Mexico, Japan, China, Asia-Pacific, Middle East, and more
Resolution	203 dpi/8 dots per mm 300 dpi/12 dots per mm 600 dpi/24 dots per mm
Memory	256 MB RAM memory (4 MB user available) 512 MB Flash memory (64 MB user available)
Maximum Print Speed	356 mm per second
Print methods	Thermal transfer and direct thermal
Connection	Ethernet (additional Wi-Fi module available)
Temperature	+ 5 °C to + 41 °C
Size	269 mm x 324 mm x 495 mm (10.6 in x 12.8 in x 19.5 in)
Weight	16.3 kg (575 oz)

Specifications AdvanPrint small (SATO CT4-LX)



Air Protocol Interface	EPC global UHF Gen 2 ISO/IEC18000-6 Type C
Frequency band	868 MHz - 920 MHz
Resolution	203 dpi/8 dots per mm 305 dpi/12 dots per mm
Memory	4GB Flash / 1GB RAM
Maximum Print Speed	203 mm per second
Print methods	Direct Thermal/Thermal Transfer
Connection	Standard USB 2.0 (Type A, Type B), Ethernet (DHCPv4/DHCPv6), NFC Optional Wireless LAN Kit (Internal) Wi-Fi and Bluetooth Ver 4.1 or RS232C Option (Wi-Fi® and Wi-Fi Direct® Certified IEEE 802.11ac, Dual Band (2.4 GHz, 5 GHz))
Temperature	0°C to + 40 °C
Size	238 mm x 178 mm x 8.43 mm (9.37 in x 7.0 in x 12.6 in)
Weight	3.4 kg (7.5 lbs)



Specifications AdvanPrint large (SATO CL4NX)

Air Protocol Interface	EPC global UHF Gen 2 ISO/IEC 18000-6C
Frequency band	868 MHz - 920 MHz
Resolution	203 dpi/8 dots per mm 305 dpi/12 dots per mm 609 dpi/24 dots per mm
Memory	2GB ROM, 256MB RAM for Linux OS 4MB ROM, 64 MB RAM for ITRON OS
Maximum Print Speed	355 mm per second
Print methods	Direct Thermal/Thermal Transfer
Connection	Standard USB 2.0 (Type A, Type B), Ethernet (IPv4/IPv6) on Rear Panel, USB 2.0 (Type A) on Front Panel, RS-232C, Parallel Port, EXT I/O Interface, NFC Optional Wireless LAN Kit (Internal) Wi-Fi® and Wi-Fi Direct® Certified, IEEE 802.11ac, Dual Band (2.4 GHz, 5 GHz)
Temperature	0°C to + 40 °C
Size	271 mm x 457 mm x 321 mm (10.7 in x 18 in x 12.6 in)
Weight	15.1 kg (33 lbs)

Product codes for ordering

ADPR	-	M	-	FF	-	R	
							Model and Region
		ZD621R					
		ZEBRA	-	GB	-	ZD6A142-30EFR2EZ	Small, without WiFi, Global band
		ZEBRA	-	GB	-	ZD6A142-30ELR2EZ	Small, with WiFi, Global band
		ZEBRA	-	US	-	ZD6A142-301FR1EZ	Small, without WiFi, US and Canada
		ZEBRA	-	US	-	ZD6A142-301LR1EZ	Small, with WiFi, US and Canada
		ZEBRA	-	AP	-	ZD6A142-30PFR2EZ	Small, without WiFi, Asia Pacific
		ZEBRA	-	AP	-	ZD6A142-30PLR2EZ	Small, with WiFi, Asia Pacific
		ZEBRA	-	CN	-	ZD6A142-309FR2EZ	Small, without WiFi, China
		ZEBRA	-	CN	-	ZD6A142-309LR2EZ	Small, with WiFi, China
		ZEBRA	-	JP	-	ZD6A142-308FR3EZ	Small, without WiFi, Japan
		ZEBRA	-	JP	-	ZD6A142-308LR3EZ	Small, with WiFi, Japan
		ZT411					
		ZEBRA		-		ZT41142-T0E00C0Z	Large, Global band, 203 dpi
		ZEBRA		-		ZT41143-T0E00C0Z	Large, Global band, 300 dpi
		ZEBRA		-		ZT41142-T0100A0Z	Large, US and Canada, 203 dpi
		ZEBRA		-		ZT41143-T0P00C0Z	Large, Asia Pacific, 203 dpi
		ZEBRA		-		ZT41143-T0P00C0Z	Large, Asia Pacific, 300 dpi
		CT4-LX					
		SATO		-		WWCT03242ZNAR	Small, 203 dpi
		CL4NX					
		SATO		-		WWCLP170ZNAREU	Large, 203 dpi

Examples:

ADPR-ZEBRA-GB-ZD6A142-30EFR2EZ:

- AdvanPrint: RFID Printer ZD621R, configured for AdvanCloud
- Global frequency band
- Ribbon not included

ADPR-ZEBRA-AP-ZD6A142-30PFR2EZ:

- AdvanPrint: RFID Printer ZD621R, configured for AdvanCloud
- APAC (except China, Japan)
- Ribbon not included

ADPR-SATO-WWCT03242ZNAR:

- AdvanPrint
- Model: SATO CT4LX 203 dpi - SATO-WWCT03242ZNAR



Copyright © Keonn Technologies S.L.
All rights reserved.

Information in this publication
supersedes all earlier versions.
Specifications subject to change
without notice.

