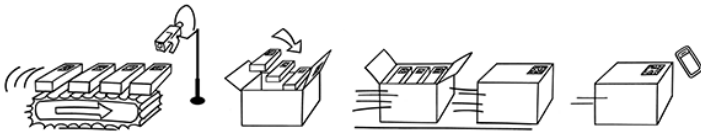


TPD TRACK & TRACE SOLUTION FOR SUPPLY CHAIN

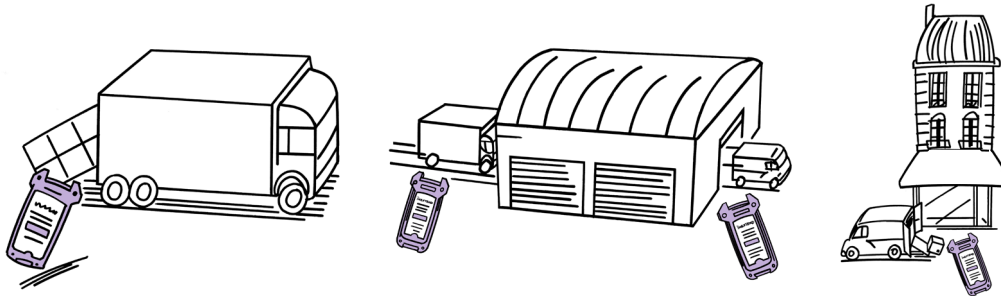
The most cost-effective mobile solution to track and trace the supply chain in full compliance with the EU Tobacco Products Directives (TPD) requirements



KEY DATES

May 2019	Cigarettes & Make-your-own tobacco
May 2024	Other tobacco products

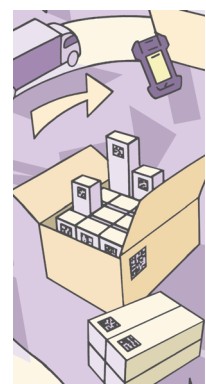
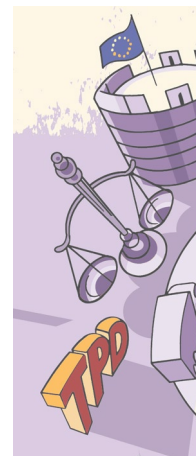
- Tracking events for packs, outers, cases and pallets
- Dedicated for warehouses, distribution centers, transloads, van distribution, etc.
- Fully mobile-enabled
- Hosted cloud back-end for master data management and reporting
- Full integrated with EU TPD Systems



INEXTEND is a fully Managed Service, combining the INEXTEND TPD Compliant software together with certified scanning devices, pay-as-you-go data roaming SIMs, and a fully managed service that includes ordering, delivery, support (1st, 2nd, 3rd levels) and maintenance capabilities.

BENEFITS

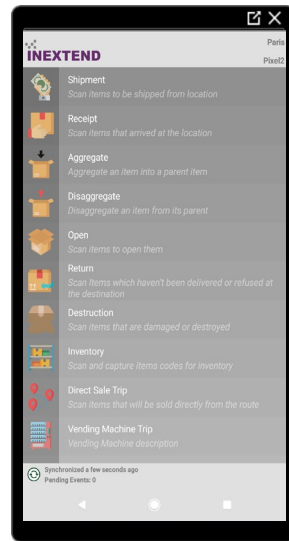
- Full **visibility** of the supply chain up to P.O.S.
- Fully TPD **Compliant**
- Complies with **GS1/EPCIS** Standards
- **Stock Control** at Tracking Location
- **Analytics** of time to delivery



INEXTEND TPD COMPLIANT

SUPPORTED TPD EVENTS

- ✓ Scan-In / Receipt
- ✓ Scan-Out / Ship
- ✓ Returns
- ✓ Inventory
- ✓ Scan-Open
- ✓ Scan-Damaged
- ✓ Aggregation
- ✓ Disaggregation



KEY CAPABILITIES

- ✓ Logistics Processes :
Warehouse, Distribution, Trans-loading, Direct Sales, Vending Machines
- ✓ External systems registration & security
- ✓ Dynamic properties & event preparation template
- ✓ Transmission-acknowledgment management
- ✓ Printing & relabeling operation



CERTIFIED HARDWARE

- ✓ INEXTEND certified scanners available from leading suppliers: Cognex, Zebra....
- ✓ Both GS1 barcode and Dot Code scanning capabilities
- ✓ Bluetooth and USB connected relabeling printers

GET MORE INFORMATION ON WWW.TPD.INEXTEND.COM