

# SureMDM

Secure. Monitor. Manage.



SureMDM is a leading Mobile Device Management solution used by over eighteen thousand customers worldwide. Deploy, manage, and secure mobile devices and the content they hold, keep corporate data safe, and remotely monitor and repair any device from an easy-to-use central console.



**Our focus on combining ease-of-use with high-performance functionality** lets you painlessly identify and analyze data trends, and make smart management decisions for your company's devices.

**Our drive to innovate** has led us to be named as the sole Visionary in the Gartner Magic Quadrant for UEM Tools in 2018 and 2019. We provide support to a huge range of device types and operating systems, using our innovative Things Management Technology framework.

**Our care for our customers** has been recognized with the Gartner Peer Insights' Customer's Choice designation throughout 2018 and 2019. Our dedicated 24/7 customer support team and our constant SureMDM updates ensure that we will always be able to meet your company's evolving needs.



#### Enroll, Deploy, and Provision All of Your Devices With Ease

Enroll and set up devices in SureMDM quickly and easily. Use a wide range of possible enrollment methods, including Android Enterprise enrollment (Zero-Touch Enrollment), Apple Business Manager, Windows Autopilot, Zebra StageNow, Samsung KME, QR codes, and more.



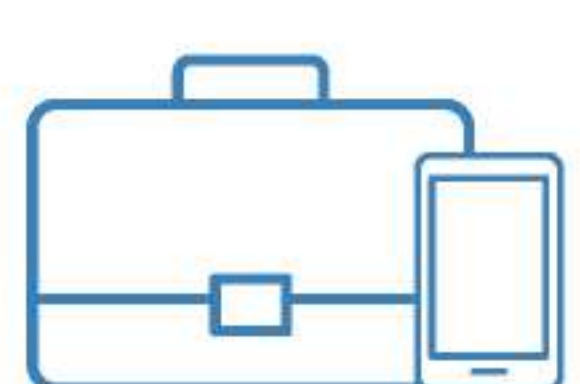
#### Manage All Devices from an Intuitive Central Web Console

The SureMDM web console's easy-to-use interface and informative dashboard give you the information you need for strong decision-making. Monitor every device, and save time and money on repairs by remotely viewing and controlling devices with Remote Control.



#### 42Gears Partners with Intel for Intel vPro and AMT integration

Use Out-of-Band management to control devices independently of their operating system. Remotely turn devices on or off, maintain a remote session even as a device reboots, and more.



#### Supports Android Enterprise and Apple Business Manager

Set up, configure, and deploy corporate-owned Android and Apple devices right out of the box.

## Key Features:



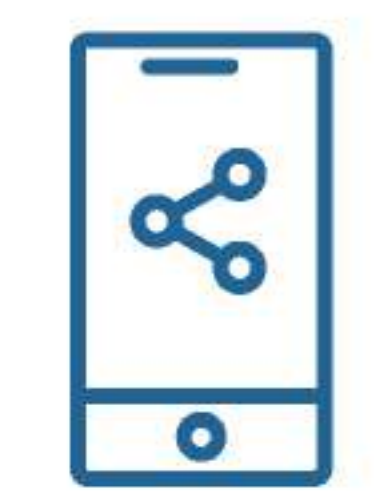
### Keep Your Devices and Data Safe

Enforce rigorous password policies and push content, applications, and identity certificates over-the-air. On BYOD devices, quarantine corporate apps separately from personal-use apps.



### Monitor and Reinforce Responsible Device Behavior

Automatically activate policies based on time, location, or a device's current Wi-Fi network. If devices are stolen or break these rules, remotely lock, reboot, or wipe them for peace of mind.



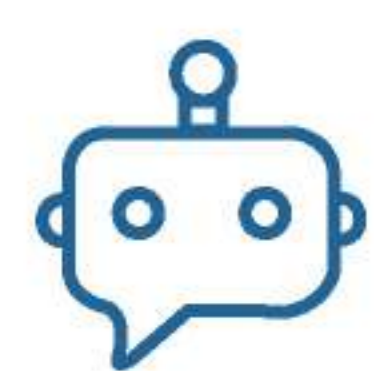
### Remote Support and Troubleshooting

Skip the commute needed for in-person repairs with the ability to view and control devices remotely. Use device health reports to identify problems for preventative maintenance.



### Wearable Support

Monitor, restrict, and support Apple Watches and Wear OS devices.



### Deep Thought, a First-of-its-kind Conversational AI Chatbot

Chat with Deep Thought via voice or keyboard to manage your devices easily.



### Advanced Analytics and Data Visualization

Collect and analyze any metric, and format information in a visually appealing format for stronger understanding and better decision-making.



### Industry-Leading Mobile Threat Detection Powered by Pradeo®

Screen apps, safeguard against network attacks, and detect jailbroken or rooted devices.



### Apple Business Manager

Bulk-purchase and distribute apps from the central console directly to iPhones, iPads, and Macs.



### Mass Deployment Program

Seamlessly set up and deploy corporate-owned devices with mass deployment programs such as Device Enrollment Program (Apple), Zero Touch Enrollment (Google), Knox Mass Enrollment (Samsung), StageNow (Zebra) and Windows Autopilot (Microsoft) Program.



### Things Management

Harness 42Gears Things Management Technology to monitor and manage peripheral devices like printers, batteries, cradles, and Internet of Things (IoT) devices from the SureMDM console.



### VR Device Management

Keep VR devices and content secure by pushing app updates and files to all devices at once. Single-application mode ensures devices function as intended, preventing device misuse and bolstering user engagement.



### Mobile Email Management

Enforce security compliance policies and secure corporate emails.



### Microsoft 365 Support

Microsoft 365 Define and enforce security policies across Office 365 apps and email.

#### India Sales

Email : [sales@42gears.com](mailto:sales@42gears.com)  
Phone : +91 88888 48892

#### US Sales

Email : [sales@42gears.com](mailto:sales@42gears.com)  
Phone : +1 408 758 0205

#### UK Sales

Email : [info.uk@42gears.com](mailto:info.uk@42gears.com)  
Phone : +44 0 7459918892