



# TEKLYNX PRINT MODULE

**AUTOMATED PRINTING SOLUTION**

[www.teklynx.com/printmodule](http://www.teklynx.com/printmodule)

**TEKLYNX**  
Barcode Better 

TEKLYNX

# PRINT MODULE



PRINT MODULE is print automation software that allows you to integrate TEKLYNX' proven label design and printing technologies into your existing business systems.

PRINT MODULE can print any quantity of labels to a maximum of six printers from a centralized installation and uses CODESOFT as its print engine, ensuring industry-leading What You See Is What You Get (WYSIWYG) printing and the highest level of reliability available in the industry.

## Business Benefits

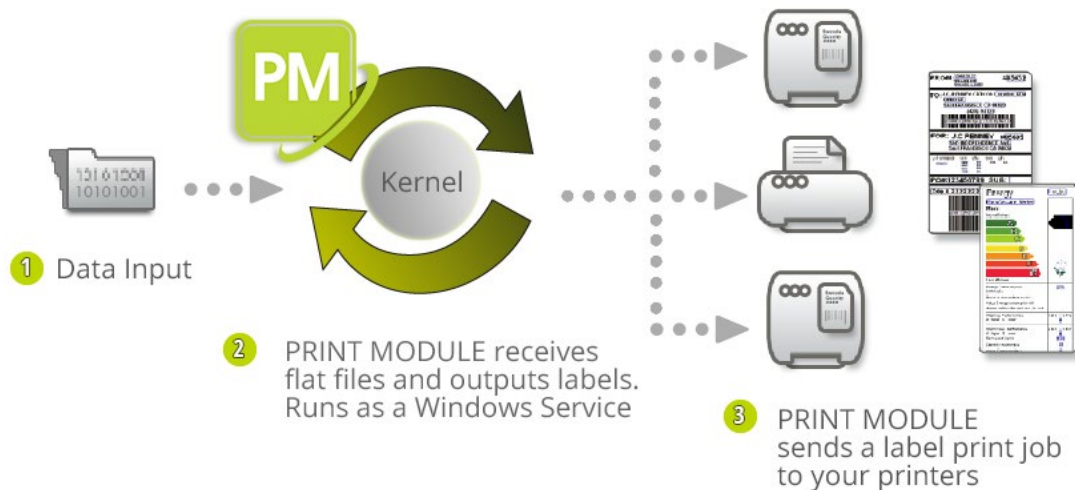
- **Centralize Print Automation** – Cuts down on infrastructure and IT costs by setting up and maintaining one server instead of countless workstations.
- **Connect With Virtually Any System** – The flat file input can come from anywhere.
- **Improve Efficiency** – Saves time and prevents errors with the elimination of manual processes.

## Key Features

PRINT MODULE runs as a Windows service and offers the following features:

- Can pilot up to 6 printers simultaneously.
  - ▶▶ Delivered by default with a 3-printer license
  - ▶▶ Additional printers can be added by purchasing a 3-printer addon part
- As a multi-task application, it allows you to manage two distinct print processes
- Supports 2 types of structured data entry in text format (.txt)
- Prints labels designed with CODESOFT
- Virtual environment not supported
- User interface available in English and French

# How does PRINT MODULE work?



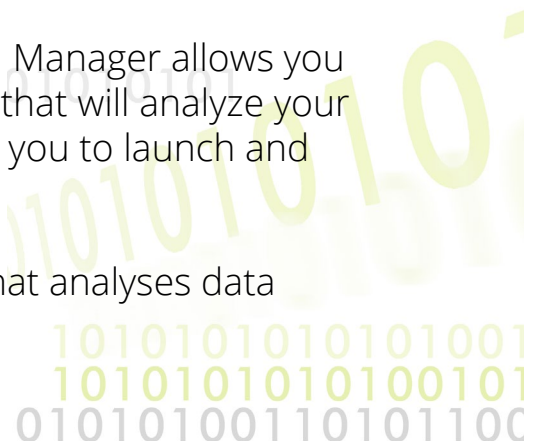
## Brief Overview

PRINT MODULE allows you to automatically print labels designed with CODESOFT, based on the information provided in a flat file that is dropped into a directory monitored by the application.

PRINT MODULE operates as a background task and can be configured to launch automatically when your workstation is started up. It is therefore not necessary to open a Windows work session for the application to run.

Within the PRINT MODULE Kernel, the Sentinel Manager allows you to create, configure and manage the sentinels that will analyze your input data, while the Sentinel Controller allows you to launch and monitor print jobs.

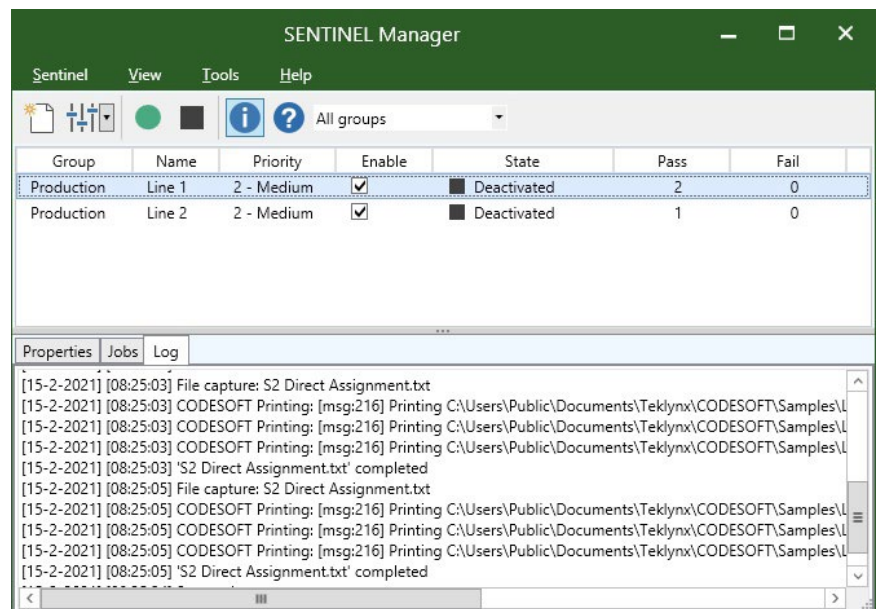
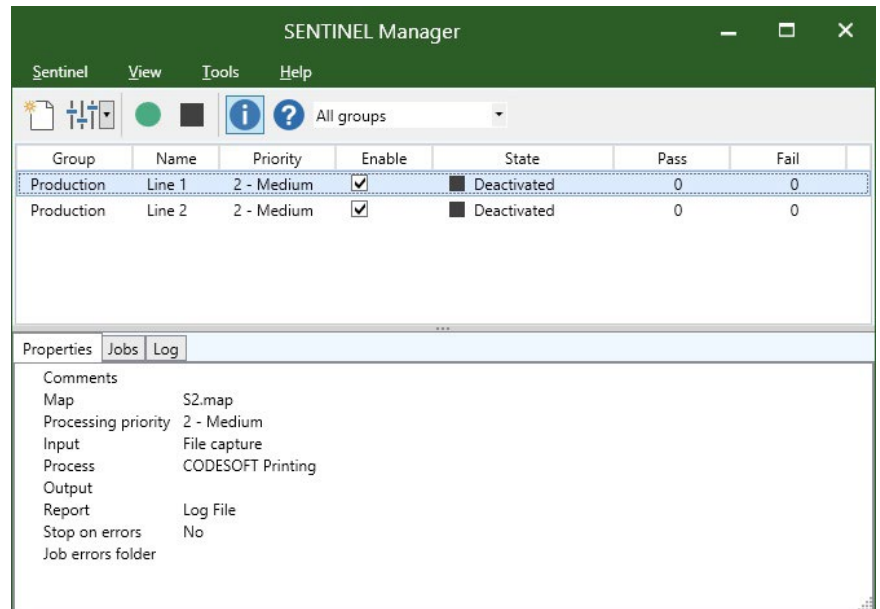
In this context, a sentinel is simply a process that analyses data input and outputs barcode labels for printing.



# PRINT MODULE Sentinel Manager

## This is used to:

- Add and remove the sentinels (processes) that will analyze your input data from text files.
- Define their properties and those of the plugins associated with them.
- Activate sentinels (print processes) and view their status
- Launch printing
- Monitor printing (display log files)



## Who is PRINT MODULE for?

In principle, small to medium-sized businesses with...

- a need for print automation, but a limited budget
- large numbers of barcode labels to print on a limited number of printers
- and requirements that go beyond CODESOFT label designer's print utility, Command File Interpreter (CFI)

## Why buy PRINT MODULE?

- Affordable middleware solution
- Makes automated label printing easy
- Runs as a service, operational 24/7

## Product Interoperability

- PRINT MODULE prints labels designed with CODESOFT
- As your labeling needs grow, you can easily migrate to SENTINEL

## Product Comparison

This table only compares features relevant to the print automation functionality offered by each product.

<b>Software</b> <b>Features</b>	<b>PRINT MODULE</b> <b>Print automation</b>	<b>SENTINEL</b> <b>Print management</b>
Multi-threading	Yes: 2 print processes	Yes: unlimited number of print processes
Number of printers supported	3 or 6	Unlimited
Data entry formats supported	2 types of structured data entry in text format (.txt)	All formats
Runs as a service	Yes	Yes
Virtual environment supported	No	Yes

TEKLYNX Subscription Licensing is available for PRINT MODULE: a cost-effective option that keeps your labeling process running. For further details, or to download a free demo, visit [www.teklynx.com](http://www.teklynx.com)

# PRINT MODULE Plug-ins

The following plug-ins are available with PRINT MODULE.

## Input plug-in: File Capture

- Collects files in a specific folder. Files are processed in chronological order – the first file listed in the folder is the first file processed.

## Process plug-in: Label Printing

- Prints your barcode labels based on input data provided.
- You can define aliases for each printer. If a printer is replaced by a different model, you just need to assign the alias to the new printer in the plug-in configuration. No data modification is required.

## Process plug-in: Label Printing Output plug-in: Transfer

- Transfers input data to a specific directory according to the process result.

## Report plug-ins:

- The Log File plug-in logs events in a text file.
- The E-mail plug-in sends an e-mail containing all events selected.

01010101  
1010101010101001  
1010101010100101  
01010100110101100

# System Requirements

## Operating System

- Windows® 10
- Windows® 8 / 8.1
- Windows® Server 2019
- Windows® Server 2016
- Windows® Server 2012 / 2012 R2
- Windows® Server Core 2019
- Windows® Server Core 2016

## Hard Disk

- 8 GB RAM
- 10 GB Available Hard Disk Space

# FAQs

## What is a Flat File?

Plain text in UTF8 encoding. If you can open the flat file with a plain text editor, PRINT MODULE can receive the file as input.

## Can I use PRINT MODULE to add label print functionality?

Yes. By integrating PRINT MODULE with CODESOFT, you can not only implement proven labeling technology, but also drive this labeling technology directly from your existing system using the features of PRINT MODULE.

## What does PRINT MODULE cost?

PRINT MODULE automated label printing software is sold through a global network of over 1,500 resellers and integrators. Pricing is available from our partners.

To find a reseller in your area contact us at [www.teklynx.com](http://www.teklynx.com)

## About TEKLYNX

TEKLYNX International helps supply chains work better. Today, more than 750,000 companies in over 170 countries trust TEKLYNX integrated barcode and RFID label design products and the people behind its solutions to make barcode labeling operations efficient, accurate, secure and industry compliant. With over 30 years of experience, TEKLYNX is the global leader because of its reliable software and superior customer support. To learn more about how the TEKLYNX community helps companies across industries worldwide, visit [teklynx.com](http://teklynx.com) or call TEKLYNX in your region. Barcode Better™ with TEKLYNX.



France  
33-562-601-080

Germany  
49-2103-2526-0

Singapore  
65-6908-0960

USA  
1-414-837-4800

© Copyright 2021 TEKLYNX Corporation SAS. All rights reserved. TEKLYNX, CODESOFT, SENTINEL and PRINT MODULE are trademarks or registered trademarks of TEKLYNX Corporation SAS or its affiliated companies.

[www.teklynx.com](http://www.teklynx.com)

